



US Army Corps
of Engineers.

AWARDED ACF CONTRACTS



38 CONTRACTS

TABLE OF CONTENTS

1 – TCF CENTER

2 – MISSOURI ACF

3 – ALASKA AIRLINES

4 – WISCONSIN STATE
FAIR EXPO CENTER

5 – GIBSON MEDICAL
CENTER

6 – MIYAMURA HIGH
SCHOOL

7 – MIAMI BEACH
CONVENTION CENTER

8 – SUBURBAN COLLECTION
SHOWPLACE

9 – PORTERVILLE
DEVELOPMENT CENTER

10 – WESTCHESTER COUNTY
CENTER

11 – UNITED MEDICAL
CENTER

12 – NEW BRIDGE-BERGEN

13 – METRO SOUTH MEDICAL
CENTER

14 – SHERMAN HOSPITAL

15 – MCCORMICK PLACE

16 – HAGERSTOWN CORR.
FACILITY

17 – WESTLAKE HOSPITAL

18 – SUNY STONY BROOK

19 – COLORADO CONVENTION
CENTER

20 – SUNY OLD WESTBURY

21 – ST. FRANCIS HOSPITAL

22 – ATSA BIYAAZH SCHOOL

23 – NEW BRIDGE BERGEN
PARKING LOT

24 – JAVITS CENTER

25 – THE RANCH EVENTS
COMPLEX

26 – CHINLE COMMUNITY
CENTER

27 – EAST ORANGE GENERAL
HOSPITAL

28 – WALTER E. WASHINGTON
CONVENTION CENTER

29 – 210 ARNG REGIONAL
TRAINING INSTITUTE

30 – INTEGRIS BAPTIST PORT.
CAMPUS

31 – OSU MEDICAL CENTER

32 – EUGENE RIVER
AVENUE FACILITY

33 – LOTTER BUILDING
MILWAUKEE COUNTY

34 – KALISPELL REGIONAL
MEDICAL CENTER

35 – NASHVILLE GENERAL
HOSPITAL

36 – ST. LUKE'S MEDICAL
CENTER

37 – COMMERCIAL
APPEAL BUILDING

38 – MEMORIAL HOSPITAL

TCF CENTER – DETROIT, MI

ARENA TO HEALTHCARE (A2HC)

Alternate Care Facility Overview

Location: Detroit, MI
MSC: Great Lakes & Ohio River Div. (LRD)
FEMA Region: V
Contractor: Detroit Reg. Conv./COBO Hall
Type: Arena (A2HC)
Patient Type: COVID
Facility Size: 725,000 SF
Bed Capacity: 970
Address: 1 Washington Blvd., Detroit, MI 48226



Timeline

Assessment MA received	25 MAR 20
Construction MA received	30 MAR 20
Contract Awarded	31 MAR 20
Construction Start	31 MAR 20
Contractual Completion	09 APR 20
Estimated Completion	09 APR 20
Actual Completion	09 APR 20
Total Construction Duration	10 Days
Notes: 100% Complete; First patients arrived on 11 APR 20.	

Projected Bed Shortfall 07 JUN – 14 JUN



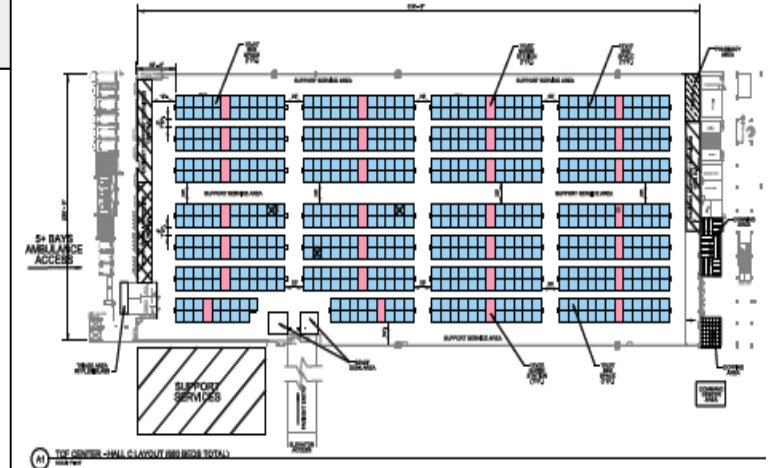
Plans

Plans Key:
Blue = Patient rooms / beds
Pink/Purple: Nurse stations

Notes:

- *2 Halls:
 - Hall C (depicted on the right): 600 beds with negative pressure for the entire hall
 - Hall E: 370 beds with negative pressure (no O2) for the entire hall

*Facility is equipped with oxygen lines and negative pressure.



AT THE CENTER - HALL CLAYOUT (BEDS TOTAL)

In Progress Photos



Alternate Care Facility Overview

Location: Florissant, MO
MSC: Northwest Division (NWD)
FEMA Region: VII
Contractor: Tarlton
Type: Hotel (H2HC)
Patient Type: COVID
Facility Size: 45,000 SF
Bed Capacity: 118
Address: 55 Dunn Rd., Florissant, MO 63031



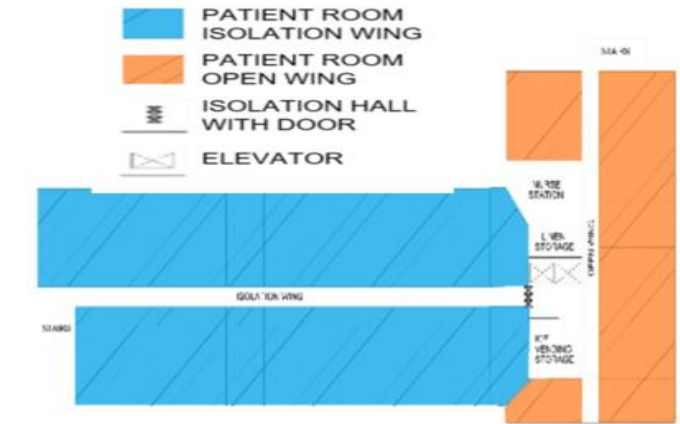
Plans

Plans Key:

Layout of 3rd Floor
Total of 4 floors with similar layout.

Notes:

118 Patient Units
4 Nurse Stations
12 Support Areas



Timeline

Assessment MA received	06 APR 20
Construction MA received	06 APR 20
Contract Awarded	08 APR 20
Construction Start	08 APR 20
Contractual Completion	12 APR 20
Estimated Completion	11 APR 20
Actual Completion	11 APR 20
Total Construction Duration	4 Days
<u>Notes:</u> 100% Complete; First patient admitted 15 APR.	

Projected Bed Shortfall 07 JUN – 14 JUN



In Progress Photos



COVID Convalescent Patient Room



MG Toy Meets with Contractors

ALASKA AIRLINES CENTER – ANCHORAGE, AK

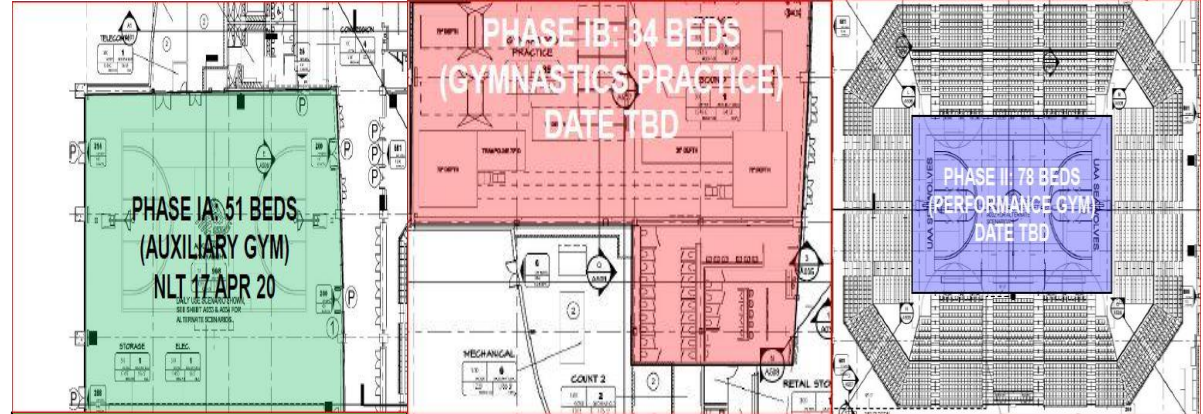
ARENA TO HEALTHCARE (A2HC)

Alternate Care Facility Overview

Location: Anchorage, AK
MSC: Pacific Ocean Division (POD)
FEMA Region: X
Contractor: Nesser-Paug/Vick
Type: Arena (A2HC)
Patient Type: COVID
Facility Size: 196k SF
Bed Capacity: 51 (PH. 1A)
Address: 3550 Providence Drive, Anchorage, AK 99501



Plans

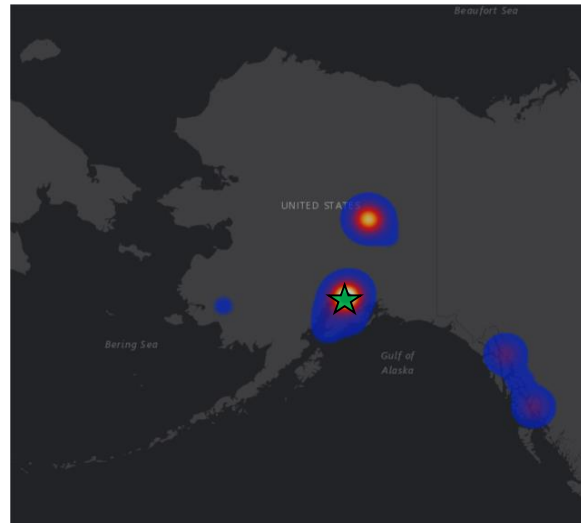


Phase 1A: 51 Beds (aux gym) + Staff Clean Area 57 CTR; 6 USACE Employees	Phase 1B: 34 Beds (Gymnastic Practice area)	Phase 2: 78 Beds erected in Performance Gym Area
---	---	--

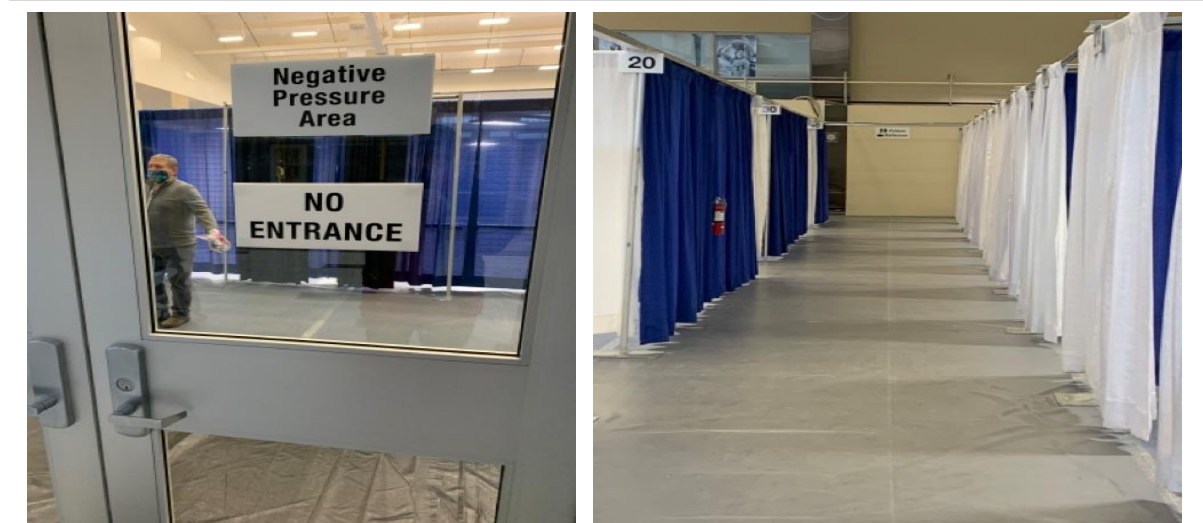
Timeline

Assessment MA received	27 MAR 20
Construction MA received	07 APR 20
Contract Awarded	09 APR 20 (PH. 1A)
Construction Start	09 APR 20 (PH. 1A)
Contractual Completion	17 APR 20 (PH.1A)
Estimated Completion	17 APR 20 (PH.1A)
Actual Completion	17 APR 20 (PH.1A)
Total Construction Duration	9 Days
Notes: 100% Complete	

Heat Map COVID-19



In Progress Photos





US Army Corps
of Engineers.

WISCONSIN STATE FAIR EXPO CENTER – WEST ALLIS, WI

ARENA TO HEALTHCARE (A2HC)



Alternate Care Facility Overview

Location: Wisconsin State Fair Expo Center
MSC: Mississippi Valley Division (MVD) Executing: Great Lakes & River Division (LRD)
FEMA Region: V
Contractor: Gilbane Building Company
Type: Arena (A2HC)
Patient Type: COVID
Facility Size: 199k SF
Bed Capacity: 530
Address: 640 S. 84 th St., West Allis, WI



Plans

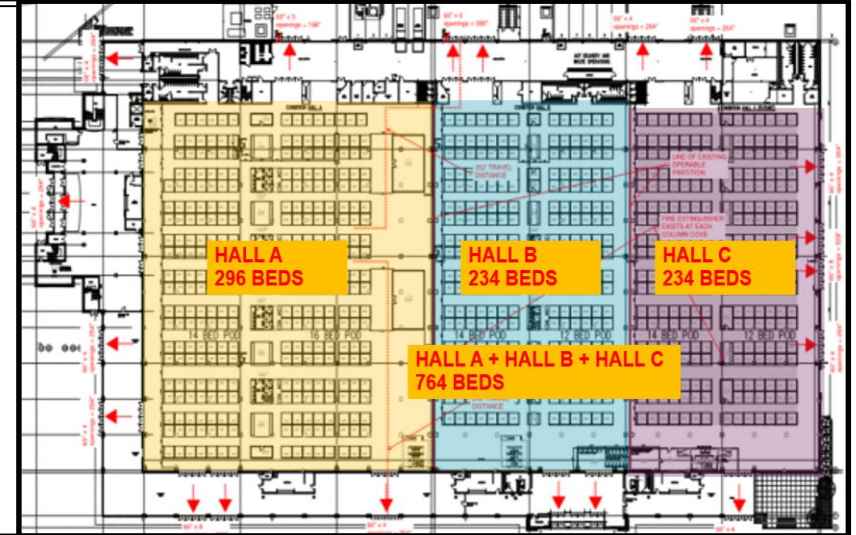
Notes:

Floor Plan Layout of ACF at WI State Fairgrounds Exposition Hall.

Hall C is shown for Design only so it is not factored into the overall bed capacity.

296 beds with inline oxygen.

234 beds with bottled oxygen.



Timeline

Assessment MA received	29 MAR 20
Construction MA received	07 APR 20
Contract Awarded	07 APR 20
Construction Start	08 APR 20
Contractual Completion	18 APR 20
Estimated Completion	18 APR 20
Actual Completion	17 APR 20
Total Construction Duration	10 Days
<u>Notes:</u> 100% Complete	

Projected Bed Shortfall 07 JUN – 14 JUN



In Progress Photos



Alternate Care Facility Overview

Location: Albuquerque, NM
MSC: South Pacific Division (SPD)
FEMA Region: VI
Contractor: Weil Construction, Inc.
Type: Hotel (H2HC)
Patient Type: COVID
Facility Size: 160,000 SF
Bed Capacity: 200
Address: 5400 Gibson Blvd. SE, Albuquerque, NM 87109



Plans

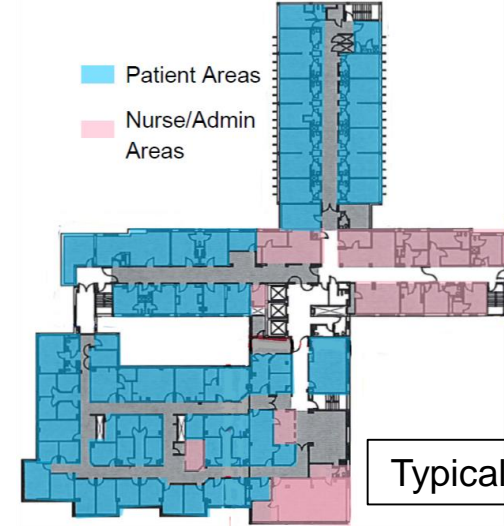
Notes:

20 acute COVID Beds
180 non-acute COVID Beds

Converted and restored unoccupied sections of five floors of an Inactive Hospital

Installed HVAC systems to achieve negative pressure on all floors

Oxygen lines will run to patient rooms on two floors



Typical Floor Plan

Timeline

Assessment MA received	17 MAR 20
Construction MA received	01 APR 20
Contract Awarded	03 APR 20
Construction Start	04 APR 20
Contractual Completion	18 APR 20
Estimated Completion	18 APR 20
Actual Completion	18 APR 20
Total Construction Duration	15 Days

Projected Bed Shortfall 07 JUN – 14 JUN



In Progress Photos



MIYAMURA HIGH SCHOOL – GALLUP, NM

ARENA TO HEALTHCARE (A2HC)

Alternate Care Facility Overview

Location: Gallup, NM
MSC: South Pacific Division (SPD)
FEMA Region: VI
Contractor: Four Winds Joint Venture
Type: Arena (A2HC)
Patient Type: COVID
Facility Size: 12,000 SF
Bed Capacity: 60
Address: 680 Boardman Ave., Gallup, NM 87301



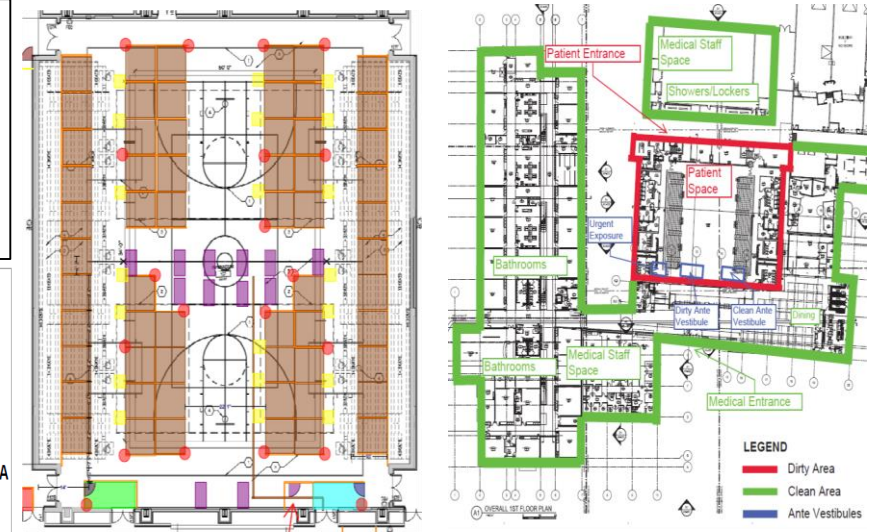
Plans

Notes:

Gym negatively pressurized to safely house patients

Oxygen lines installed to each patient pod

- 2 - Clean Vestibule 14'x6' - 1 EA
- 3 - Dirty Vestibule 14'x6' - 1 EA
- 6 - Nurse Station - 12 EA
- 7 - 6' Walkway - 276 LF
- 8 - Temporary Walls - 1,056 LF
- 9 - 5' Walkway - 105 LF
- 12 - 9' Walkway - 189 LF
- 13 - Decontamination Vestibule - 99 SF
- 14 - Handwash Sink 3' into aisle way max - 20 EA
- 15 - Vestibule Door - 5 EA
- 21 - Patient Room 8'x8' - 60 EA



Timeline

Assessment MA received	17 MAR 20
Construction MA received	04 APR 20
Contract Awarded	05 APR 20
Construction Start	06 APR 20
Contractual Completion	20 APR 20
Estimated Completion	19 APR 20
Actual Completion	19 APR 20
Total Construction Duration	14 Days

Projected Bed Shortfall 07 JUN – 14 JUN



In Progress Photos



Notes: 100% Complete;



US Army Corps
of Engineers.

MIAMI BEACH CONVENTION CENTER – MIAMI BEACH, FL

ARENA TO HEALTHCARE (A2HC)



Alternate Care Facility Overview

Location: Miami Beach, FL
MSC: South Atlantic Division (SAD)
FEMA Region: IV
Contractor: The Robins & Morton Group
Type: Arena (A2HC)
Patient Type: COVID
Facility Size: 1.4 M SF (overall)
Bed Capacity: 450
Address: 1901 Convention Center Drive, Miami Beach, FL 33139



Timeline

Assessment MA received	17 MAR 20
Construction MA received	04 APR 20
Contract Awarded	06 APR 20
Construction Start	08 APR 20
Contractual Completion	20 APR 20
Estimated Completion	20 APR 20
Actual Completion	19 APR 20
Total Construction Duration	12 Days
Notes: 100% Complete; Completed 5 days early.	

Projected Bed Shortfall 07 JUN – 14 JUN



Plans

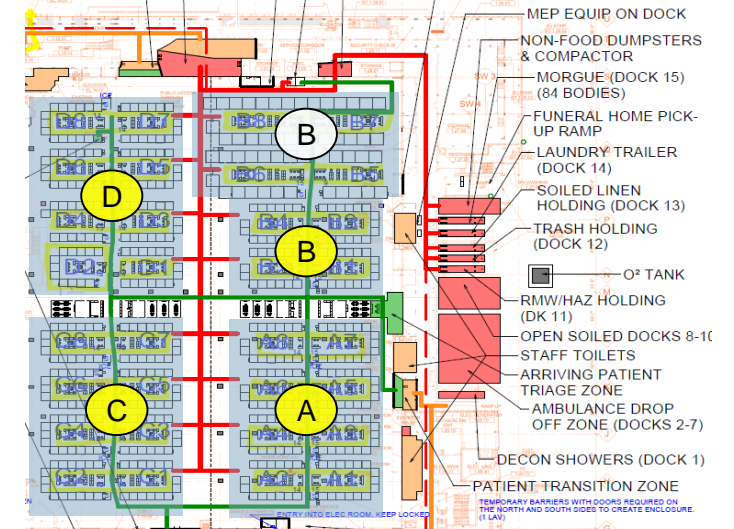
Notes:

Zones A, C, D, and half of B total 400 COVID-19 acute care pods

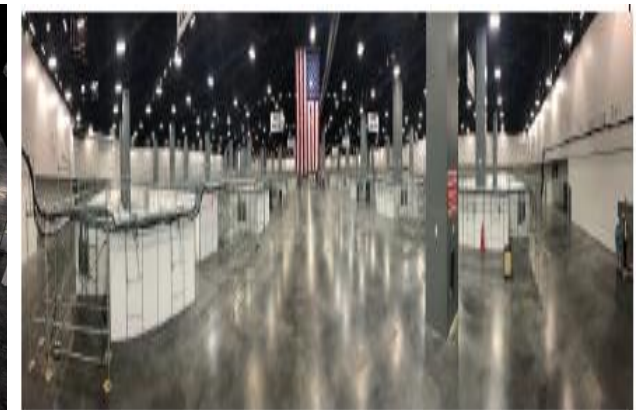
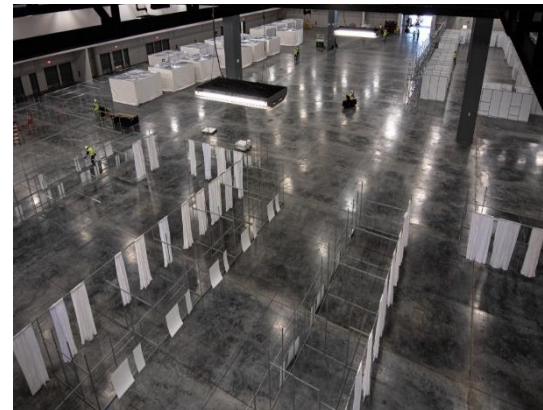
Top half of Zone B totals 50 COVID-19 ICU level isolation pods

Key:

- Acute Care
- ICU Care



In Progress Photos



Complete Facility



US Army Corps
of Engineers.

SUBURBAN COLLECTION SHOWPLACE – NOVI, MI

ARENA TO HEALTHCARE (A2HC)



Alternate Care Facility Overview

Location: Novi, MI
MSC: Great Lakes and Rivers Division (LRD)
FEMA Region: V
Contractor: Gilbane Federal
Type: Arena (A2HC)
Patient Type: COVID
Facility Size: 250k SF
Bed Capacity: 250
Address: 46100 Grand River Ave., Novi, MI 48374



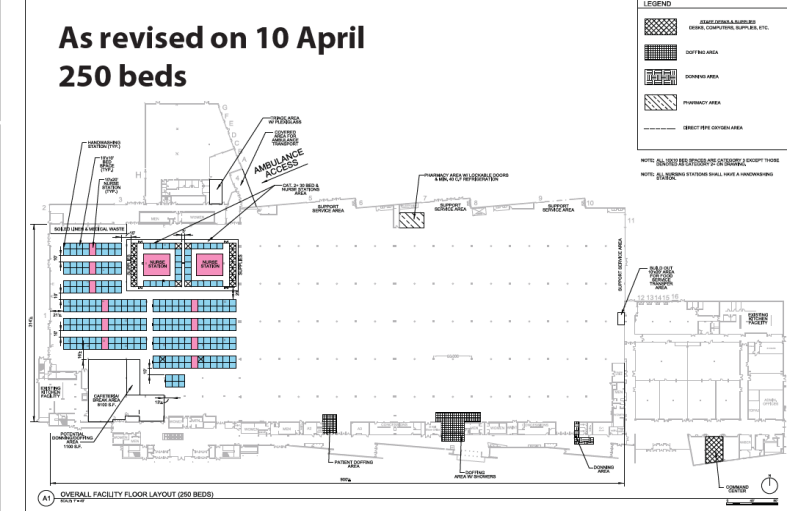
Plans

Plans Key:
Blue = Patient rooms / beds
Pink/Purple: Nurse stations

Notes:
250 patient units including plumbed oxygen.

12 Nurse Stations

900 SF Built-In Pharmacy
*Facility is equipped with oxygen lines and negative pressure.



Timeline

Assessment MA received	30 MAR 20
Construction MA received	05 APR 20
Contract Awarded	05 APR 20
Construction Start	06 APR 20
Contractual Completion	20 APR 20
Estimated Completion	20 APR 20
Actual Completion	20 APR 20
Total Construction Duration	15 Days

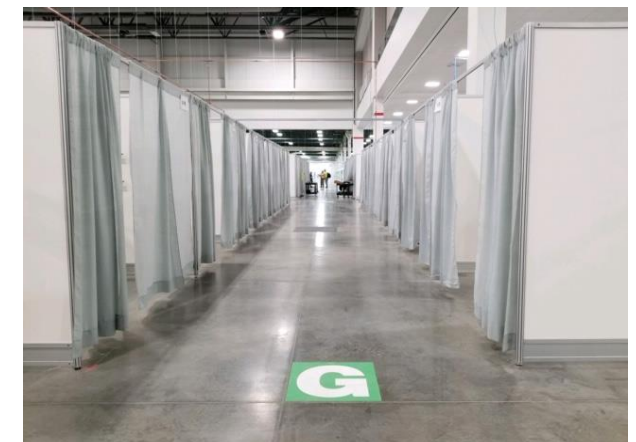
Projected Bed Shortfall 07 JUN – 14 JUN



In Progress Photos



National Guard Leadership Tour



Completed Facility Signage

Notes: 100% Complete; Date Patients Arrived: 24 APR 20.



PORTERVILLE DEVELOPMENT CENTER – PORTERVILLE, CA

HOTEL TO HEALTHCARE (H2HC)



US Army Corps
of Engineers.

Alternate Care Facility Overview

Location: Porterville, CA
MSC: South Pacific Division (SPD)
FEMA Region: Region IX
Contractor: Herman Construction Group, Inc.
Type: Hotel (H2HC)
Patient Type: COVID
Facility Size: Varies
Bed Capacity: 246
Address: 26501 Ave. 140, Porterville, CA 93257



Plans

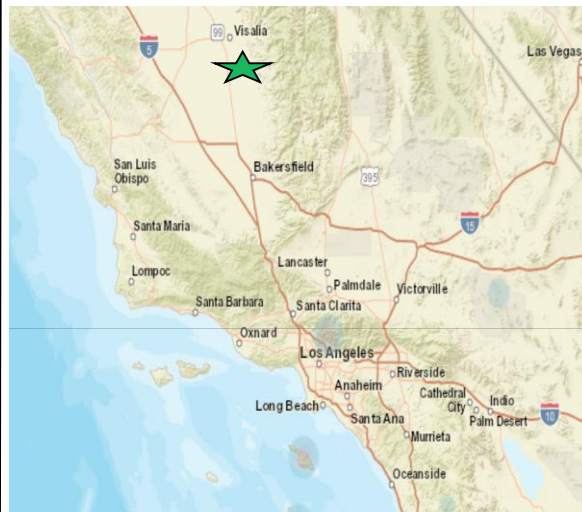
Notes:
6 buildings with an average of 41 beds per building



Timeline

Assessment MA received	24 MAR 20
Construction MA received	02 APR 20
Contract Awarded	05 APR 20
Construction Start	08 APR 20
Contractual Completion	21 APR 20
Estimated Completion	21 APR 20
Actual Completion	21 APR 20
Total Construction Duration	14 Days
Notes: 100% Complete;	

Projected Bed Shortfall 07 JUN – 14 JUN



In Progress Photos





US Army Corps
of Engineers.

WESTCHESTER COUNTY CENTER – WHITE PLAINS, NY

ARENA TO HEALTHCARE (A2HC)



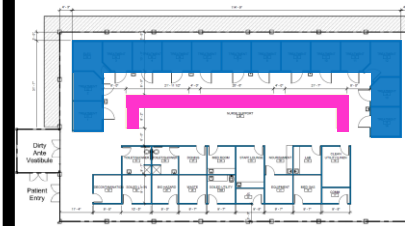
Alternate Care Facility Overview

Location: White Plains, NY
MSC: North Atlantic Division (NAD)
FEMA Region: II
Contractor: Haugland Energy Group, LLC.
Type: Arena (A2HC)
Patient Type: COVID
Facility Size: 60,000 SF
Bed Capacity: 110
Address: 198 Central Avenue, White Plains, NY 10606

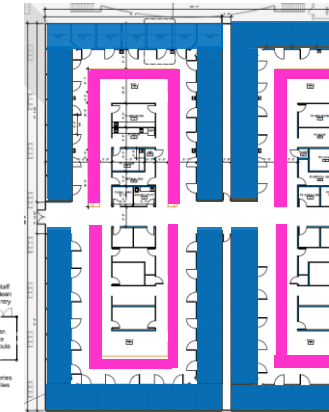


Plans

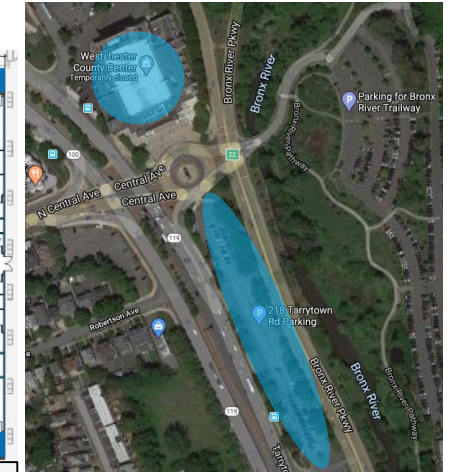
Notes: Site plan - upper location interior with 54 beds - lower location new temporary tents with 56 beds.
Floor plans: blue – patient rooms; pink - nurse stations



Tent layout



Interior layout



Timeline

Assessment MA received	18 MAR 20
Construction MA received	23 MAR 20
Contract Awarded	27 MAR 20
Construction Start	27 MAR 20
Contractual Completion	22 APR 20
Estimated Completion	22 APR 20
Actual Completion	22 APR 20
Total Construction Duration	27 Days

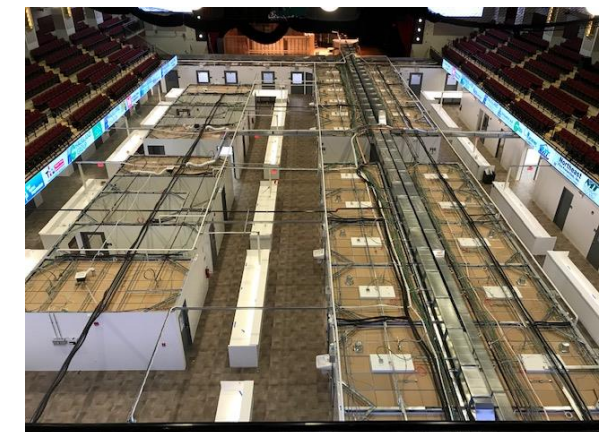
Projected Bed Shortfall 07 JUN – 14 JUN



In Progress Photos



Tent Build Out



Interior Build Out

Notes: 100% Complete

Alternate Care Facility Overview

Location: Washington, D.C.
MSC: North Atlantic Division (NAD)
FEMA Region: III
Contractor: Patriot
Type: Arena (A2HC)
Patient Type: COVID
Facility Size: 140,000 SF
Bed Capacity: 6 CMS units
Address: 1310 Southern Ave SE, Washington, DC 20032

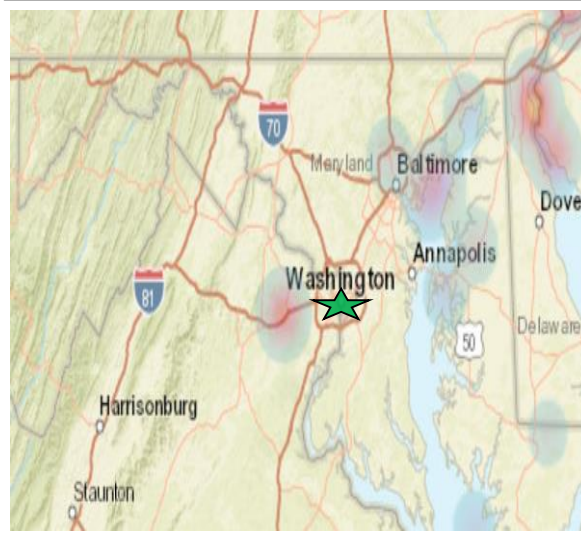


Timeline

Assessment MA received	N/A
Construction MA received	07 APR 20
Contract Awarded	08 APR 20
Construction Start	09 APR 20
Contractual Completion	22 APR 20
Estimated Completion	22 APR 20
Actual Completion	22 APR 20
Total Construction Duration	14 Days

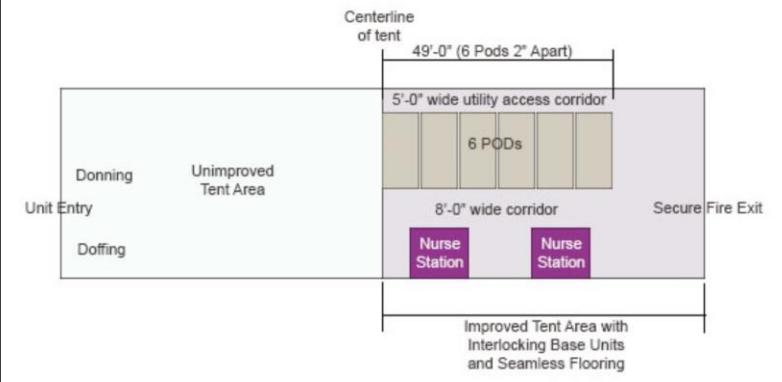
Notes: 100% Complete; DC is working on the wrap around services and finishing up the site. Estimated opening of the facility is mid May.

Projected Bed Shortfall 07 JUN – 14 JUN



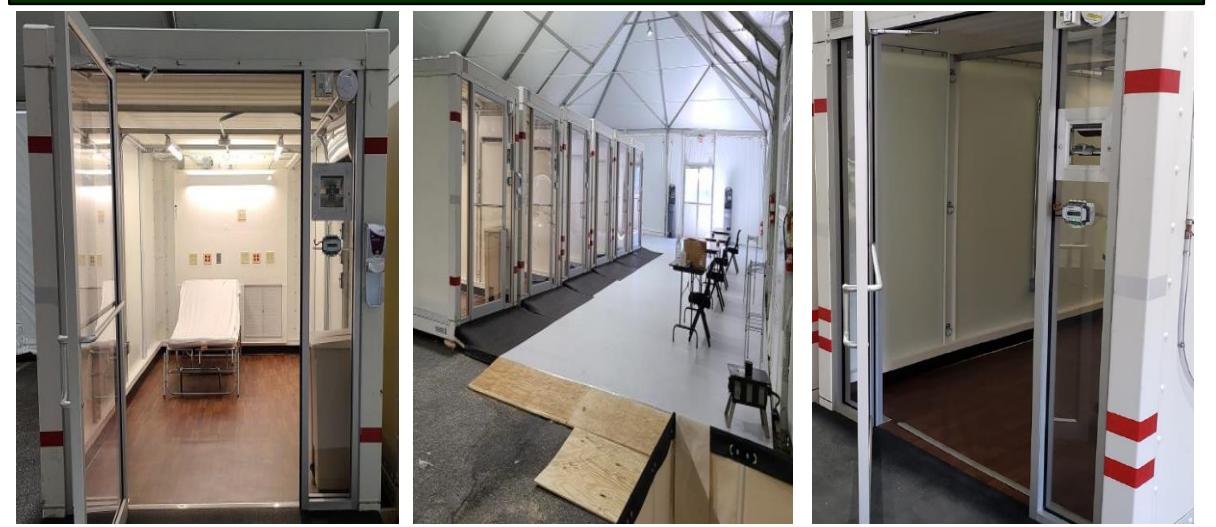
Plans

- Plans Key:**
- 6 x CMS Set up outside of the UMC in the parking lot.
 - CMS's to be set up inside of a tent.
- Notes:**
- 06MAY20: Contractor sent Release of Claims to NAB
 - 07MAY20 – Present: Working on final close out documents



Submitted Layout for Inside of the Tent – Nurses Stations and Wrap Around Services are being Completed by City of Washington, DC

In Progress Photos





NEW BRIDGE-BERGEN MEDICAL CENTER - PARAMUS, NJ

ARENA TO HEALTHCARE (A2HC)



US Army Corps
of Engineers.

Alternate Care Facility Overview

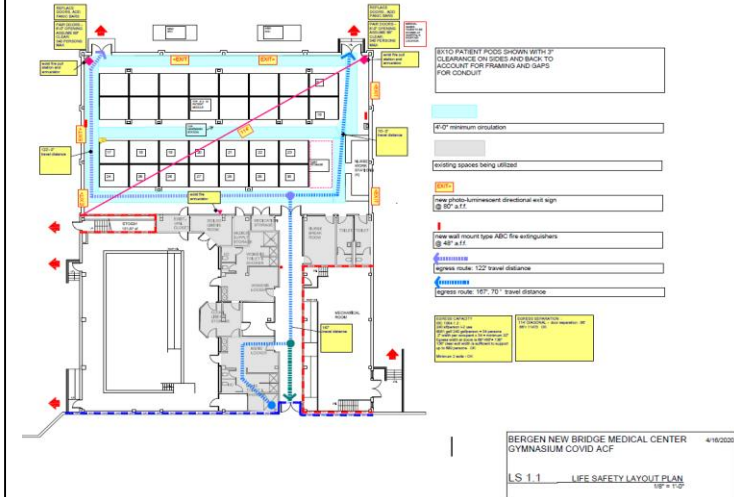
Location: Paramus, NJ
MSC: North Atlantic Division (NAD)
FEMA Region: II
Contractor: CONTI Federal Services, LLC.
Type: Arena (A2HC)
Patient Type: NON-COVID
Facility Size: 6,000 SF
Bed Capacity: 30
Address: 230 E Ridgewood Ave, Paramus, NJ 07652



Plans

Notes

Gym is planned to hold 30 beds.



Timeline

Assessment MA received	23 MAR 20
Construction MA received	29 MAR 20
Contract Awarded	08 APR 20
Construction Start	09 APR 20
Contractual Completion	23 APR 20
Estimated Completion	23 APR 20
Actual Completion	22 APR 20
Total Construction Duration	14 Days
Notes: 100% Complete;	

Projected Bed Shortfall 07 JUN – 14 JUN



In Progress Photos





US Army Corps
of Engineers.

METRO SOUTH MEDICAL CENTER – BLUE ISLAND, IL

HOTEL TO HEALTHCARE (H2HC)



Alternate Care Facility Overview

Location: Blue Island, IL
MSC: Great Lakes & Ohio River Div. (LRD)
FEMA Region: V
Contractor: Clark Construction Group, LLC.
Type: Hotel (H2HC)
Patient Type: COVID
Facility Size: 281,256 SF
Bed Capacity: 585
Address: 12935 S Gregory St., Blue Island, IL 60406



Plans

Notes:

Plans have been adjusted resulting in a slightly lower bed count than what is depicted

Mezzanine (top center)	
Patient intake	Tier 3 (27 beds)
Patient food catering	Tier 2 (6 beds)
Staff food catering	Tier 1 (16 beds)
First Floor (top right)	
Staff PPE/Changing/Admin	Tier 3 (23 beds)
Tier 2 (14 beds)	Tier 3 (23 beds)
Second Floor (middle left)	
Equipment cleaning area	Tier 3 (55 beds)
Tier 2 (17 beds)	Tier 3 (55 beds)
Third Floor (middle center)	
Tier 1 (3 beds)	Tier 3 (35 beds)
Tier 2 (68 beds)	Tier 3 (35 beds)
Fourth Floor (middle right)	
Tier 2 (66 beds)	Tier 3 (57 beds)
Tier 2 (66 beds)	Tier 3 (57 beds)
Fifth Floor (bottom left)	
Tier 1 (3 beds)	Tier 3 (63 beds)
Tier 2 (69 beds)	Tier 3 (63 beds)
Sixth Floor (bottom center)	
Tier 2 (69 beds)	Tier 3 (63 beds)



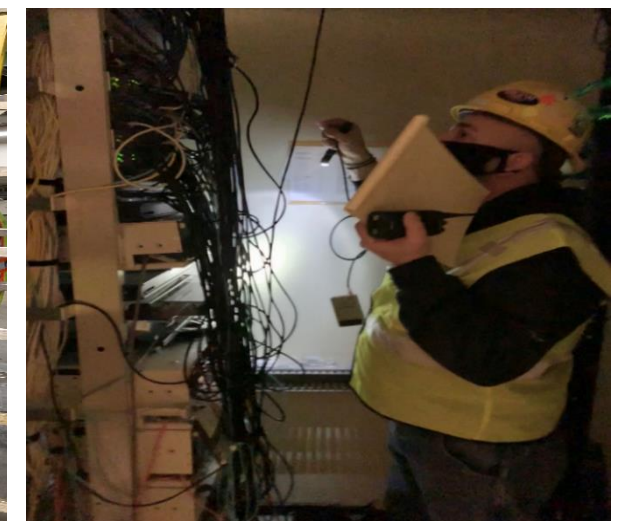
Timeline

Assessment MA received	22 MAR 20
Construction MA received	27 MAR 20
Contract Awarded	29 MAR 20
Construction Start	30 MAR 20
Contractual Completion	24 APR 20
Estimated Completion	23 APR 20
Actual Completion	23 APR 20
Total Construction Duration	25 Days

Projected Bed Shortfall 07 JUN – 14 JUN



In Progress Photos

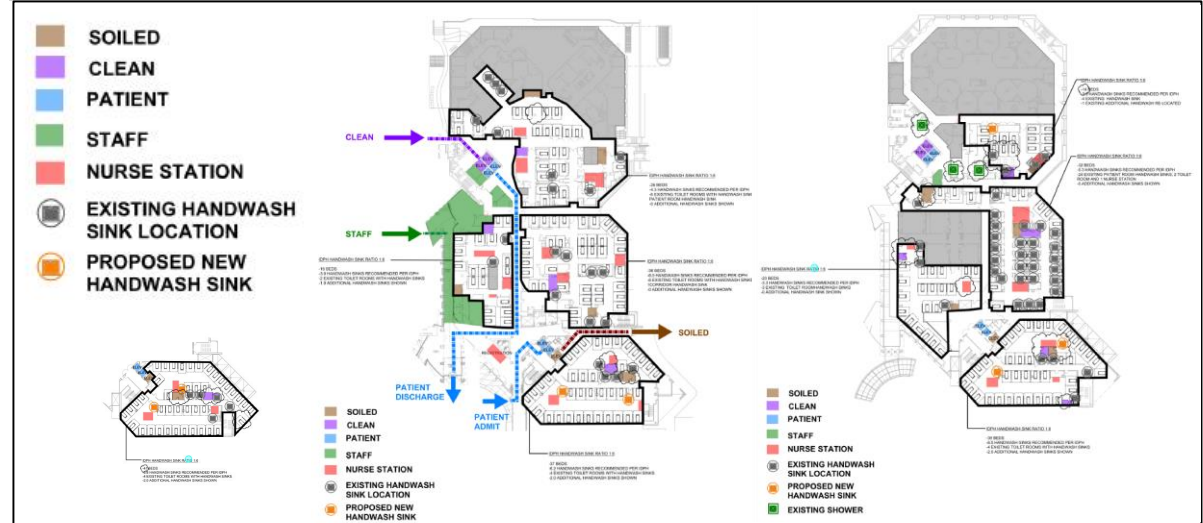


Alternate Care Facility Overview

Location: Elgin, IL
MSC: Great Lakes & Ohio River Div. (LRD)
FEMA Region: V
Contractor: Turner Construction Company
Type: Hotel (H2HC)
Patient Type: COVID
Facility Size: 371,000 SF
Bed Capacity: 274
Address: 901 Center St., Elgin, IL 60120



Plans



Timeline

Assessment MA received	22 MAR 20
Construction MA received	27 MAR 20
Contract Awarded	29 MAR 20
Construction Start	30 MAR 20
Contractual Completion	24 APR 20
Estimated Completion	23 APR 20
Actual Completion	23 APR 20
Total Construction Duration	25 Days
<u>Notes:</u> 100% Complete	

Projected Bed Shortfall 07 JUN – 14 JUN



In Progress Photos





US Army Corps
of Engineers.

MCCORMICK PLACE – CHICAGO, IL

ARENA TO HEALTHCARE (A2HC)



Alternate Care Facility Overview

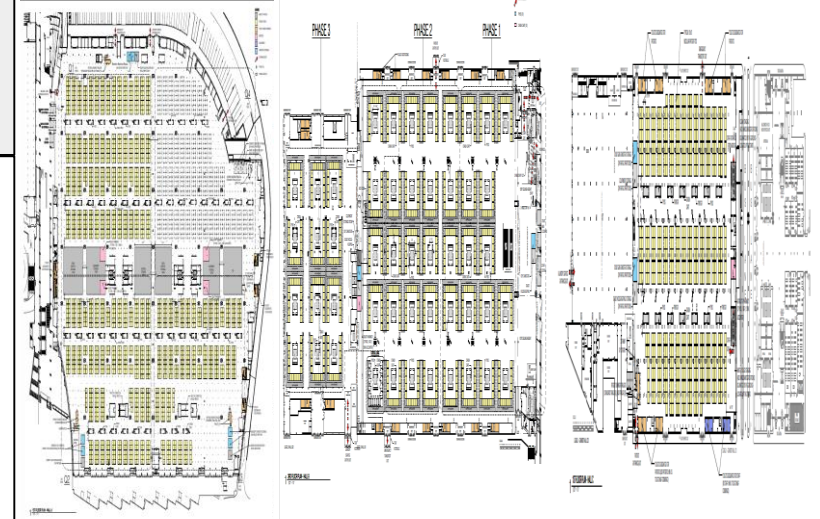
Location: Chicago, IL
MSC: Great Lakes & Ohio River Div. (LRD)
FEMA Region: V
Contractor: Metro. Pier and Expo. Authority
Type: Arena (A2HC)
Patient Type: COVID
Facility Size: 1.5M SF
Bed Capacity: 3,000
Address: 2301 S King Dr., Chicago, IL 60616



Plans

Plans Key:
 Yellow= Patient pods
 Pink = Medical areas
 Orange = Toilets

Notes:
 Hall A has 1750 low acuity beds
 Hall B has 750 medium acuity beds
 Hall C has 500 low acuity beds



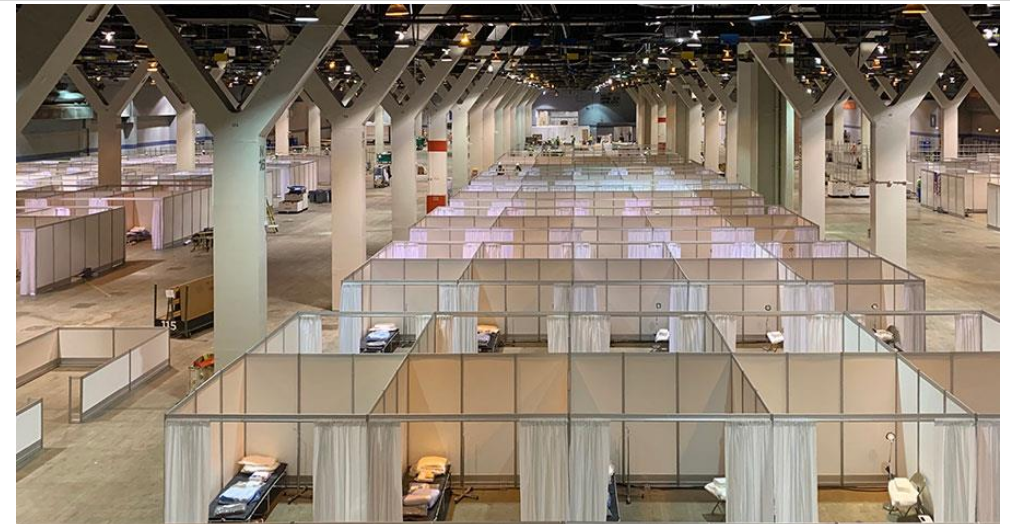
Timeline

Assessment MA received	22 MAR 20
Construction MA received	26 MAR 20
Contract Awarded	28 MAR 20
Construction Start	29 MAR 20
Contractual Completion	24 APR 20
Estimated Completion	24 APR 20
Actual Completion	23 APR 20
Total Construction Duration	26 Days

Projected Bed Shortfall 07 JUN – 14 JUN



In Progress Photos



Notes: 100% Complete; First patient admitted 15 APR 20.



US Army Corps
of Engineers.

HAGERSTOWN CORR. FACILITY – HAGERSTOWN, MD

HOTEL TO HEALTHCARE (H2HC)



Alternate Care Facility Overview

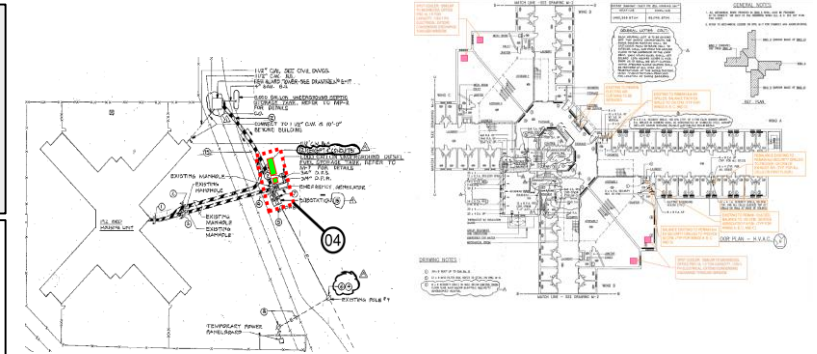
Location: Hagerstown, MD
MSC: North Atlantic Division (NAD)
FEMA Region: III
Contractor: Clark Construction Group, LLC.
Type: Hotel (H2HC)
Patient Type: COVID
Facility Size: 61,000 SF
Bed Capacity: 0
Address: 18601 Roxbury Rd Hagerstown, MD 21746



Plans

Plans Key:
Refurbish closed correctional facility for COVID prisoners.

- Notes**
- Termination letter was issued to the contractor
 - 23 APR 20. Original plan was to provide a bed capacity of 192.



Timeline

Assessment MA received	17 MAR 20
Construction MA received	03 APR 20
Contract Awarded	10 APR 20
Construction Start	13 APR 20
Contractual Completion	24 APR 20
Estimated Completion	24 APR 20
Actual Completion	24 APR 20
Total Construction Duration	12 Days

Projected Bed Shortfall 07 JUN – 14 JUN



In Progress Photos

Last 24 and Next 24:
Finalize contract documents by beginning of next week (week of 11 MAY).



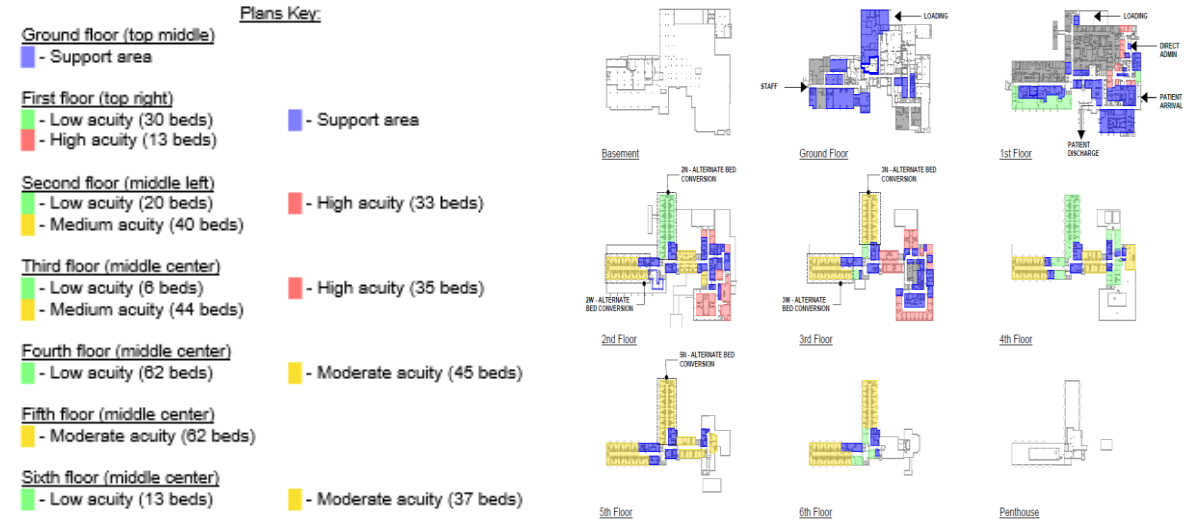
Notes: At 25% Construction Completion, project was handed over to the state to complete construction..

Alternate Care Facility Overview

Location: Melrose Park, IL
MSC: Great Lakes & Ohio River Div. (LRD)
FEMA Region: V
Contractor: Bulley & Andrews
Type: Hotel (H2HC)
Patient Type: COVID
Facility Size: 840,000 SF
Bed Capacity: 430
Address: 12225 W Lake St., Melrose Park, IL 60160



Plans



Timeline

Assessment MA received	22 MAR 20
Construction MA received	22 MAR 20
Contract Awarded	05 APR 20
Construction Start	06 APR 20
Contractual Completion	24 APR 20
Estimated Completion	24 APR 20
Actual Completion	24 APR 20
Total Construction Duration	19 Days
Notes: 100% Complete; 90 inline oxygen, med gas, and vacuum 218 inline oxygen and vacuum	

Projected Bed Shortfall 07 JUN – 14 JUN



In Progress Photos



View of High/Moderate Acuity Patient Space

SUNY STONY BROOK – STONY BROOK, NY

ARENA TO HEALTHCARE (A2HC)

Alternate Care Facility Overview

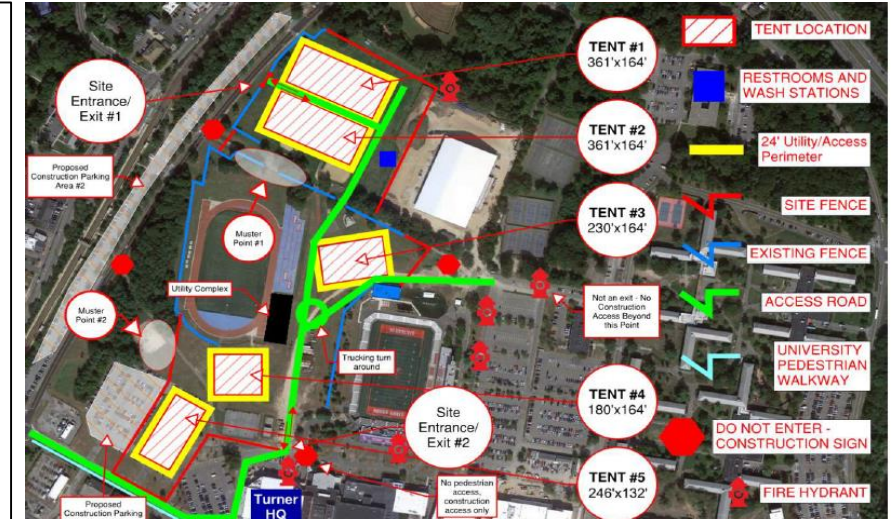
Location: Stony Brook, NY
MSC: North Atlantic Division (NAD)
FEMA Region: II
Contractor: Turner Construction Company
Type: Arena (A2HC)
Patient Type: COVID & NON-COVID
Facility Size: 255,676 SF
Bed Capacity: 1,028
Address: 100 Nichols Road, Stony Brook, NY 11794



Plans

Notes:

- Bed Breakdown**
- 270 COVID,
 - 758 Non-COVID
 - Final walkthrough with FEMA and NYS occurred on 25 APR.



Timeline

Assessment MA received	18 MAR 20
Construction MA received	23 MAR 20
Contract Awarded/NTP	29 MAR 20
Construction Start	29 MAR 20
Contractual Completion	24 APR 20
Estimated Completion	26 APR 20
Actual Completion	26 APR 20
Total Construction Duration	29 Days
Notes: 100% Complete	

Projected Bed Shortfall 07 JUN – 14 JUN



In Progress Photos





COLORADO CONVENTION CENTER – DENVER, COLORADO

ARENA TO HEALTHCARE (A2HC)



US Army Corps
of Engineers.

Alternate Care Facility Overview

Location: Denver, CO
MSC: South Pacific Division (SPD)
FEMA Region: VIII
Contractor: ECC Environmental LLC.
Type: Arena (A2HC)
Patient Type: COVID
Facility Size: 584,000 SF
Bed Capacity: 1,243
Address: 700 14 th St., Denver, CO 80202



Plans

- CLEAN
- HANDWASH STATION AND DRINKING FOUNTAIN
- NUTRITION
- SOILED
- NURSE STATION
- PATIENT ROOM
- BARIATRIC PATIENT ROOM
- RESUSCITATION PATIENT ROOM
- FLEX SPACE
- PHARMACY (ENCLOSED W/ DOOR)
- EXISTING TOILET ROOMS

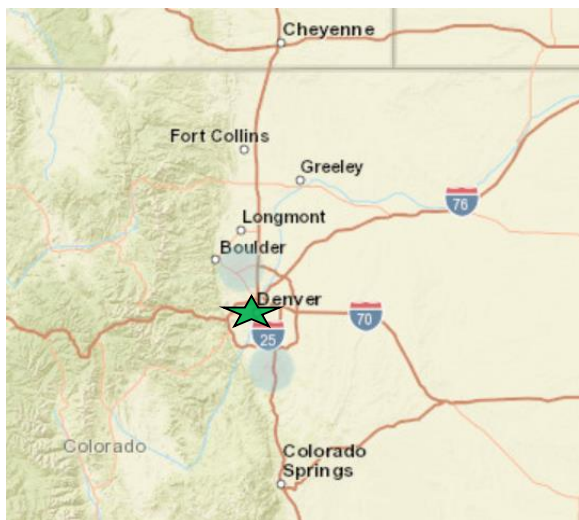


Timeline

Assessment MA received	19 MAR 20
Construction MA received	01 APR 20
Contract Awarded	05 APR 20
Construction Start	09 APR 20
Contractual Completion	27 APR 20
Estimated Completion	27 APR 20
Actual Completion	24 APR 20
Total Construction Duration	16 Days

Notes: 100% Complete;

Projected Bed Shortfall 07 JUN – 14 JUN



In Progress Photos



SUNY OLD WESTBURY – OLD WESTBURY, NY

ARENA TO HEALTHCARE (A2HC)

Alternate Care Facility Overview

Location: Old Westbury, NY
MSC: North Atlantic Division (NAD)
FEMA Region: II
Contractor: AECOM Technical Services, Inc.
Type: Arena (A2HC)
Patient Type: COVID & NON-COVID
Facility Size: 207,000 SF
Bed Capacity: 1,024
Address: 223 Store Hill Road, Old Westbury, NY 11568



Plans

Plans Key:
 Blue = COVID ventilator-capable layout; 699 total beds
 Blue w/ red stripes: COVID non-ventilator capable layout; 221 total beds
 Orange: Non-COVID; 104 total beds

920 COVID
 104 NON-COVID



Timeline

Assessment MA received	18 MAR 20
Construction MA received	23 MAR 20
Contract Awarded	29 MAR 20
Construction Start	31 MAR 20
Contractual Completion	27 APR 20
Estimated Completion	27 APR 20
Actual Completion	27 APR 20
Total Construction Duration	28 Days
Notes: 100% Complete;	

Projected Bed Shortfall 07 JUN – 14 JUN



In Progress Photos



Alternate Care Facility Overview

Location: Trenton, NJ
MSC: North Atlantic Division (NAD)
FEMA Region: II
Contractor: TDX Sand Point Services
Type: Hotel (H2HC)
Patient Type: COVID
Facility Size: 6,000 SF
Bed Capacity: 37
Address: 601 Hamilton Ave, Trenton, NJ 08629



Plans

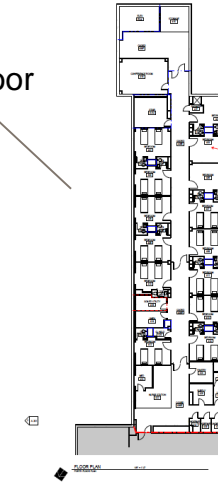
Notes

4th floor: 11 Rooms, 22 Beds

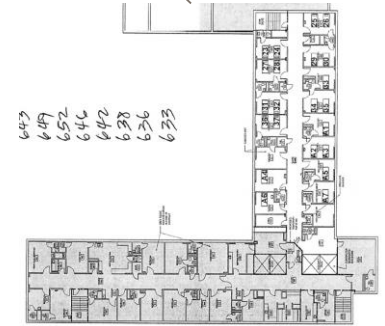
6th floor: 8 Rooms, 15 Beds

Total 37 Beds

4th Floor



6th Floor



Timeline

Assessment MA received	23 MAR 20
Construction MA received	29 MAR 20
Contract Awarded	13 APR 20
Construction Start	14 APR 20
Contractual Completion	27 APR 20
Estimated Completion	28 APR 20
Actual Completion	28 APR 20
Total Construction Duration	14 Days
Notes: 100% Complete	

Projected Bed Shortfall 07 JUN – 14 JUN



Site Visit Photos





ATSA BIYAAZH SCHOOL (NAVAJO NATION) – SHIPROCK, NM

ARENA TO HEALTHCARE (A2HC)



US Army Corps
of Engineers.

Alternate Care Facility Overview

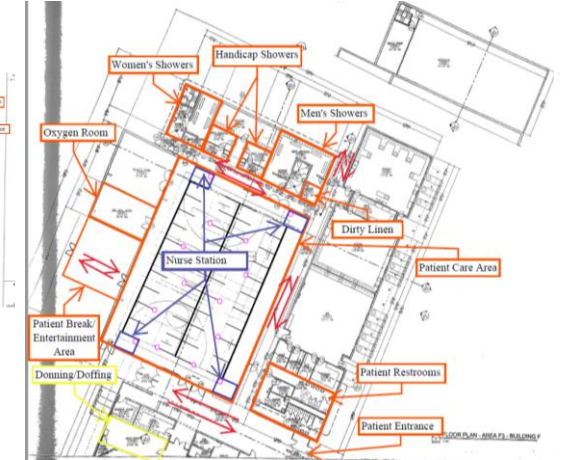
Location: Shiprock, NM
MSC: South Pacific Division (SPD)
FEMA Region: IX
Contractor: Four Winds Mechanical HTC/AC, Inc.
Type: Arena (A2HC)
Patient Type: NON-COVID
Facility Size: 7,400 SF
Bed Capacity: 40
Address: 1416 Pinon Drive, Shiprock, NM 87402



Plans

Notes:

- Facility contains
- 40 patient cubes
 - Plumbed oxygen to each cube
 - Four nurses' stations
 - No negative pressure



Timeline

Assessment MA received	04 APR 20
Construction MA received	15 APR 20
Contract Awarded	17 APR 20
Construction Start	18 APR 20
Contractual Completion	01 MAY 20
Estimated Completion	29 APR 20
Actual Completion	29 APR 20
Total Construction Duration	14 Days

Projected Bed Shortfall 07 JUN – 14 JUN



In Progress Photos



Notes: 100% Complete



NEW BRIDGE-BERGEN MED CTR PARKING LOT - PARAMUS, NJ

ARENA TO HEALTHCARE (A2HC)



US Army Corps of Engineers.

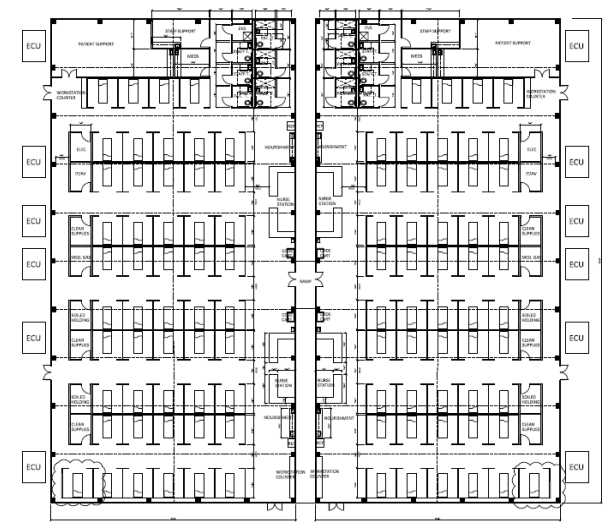
Alternate Care Facility Overview

Location: Paramus, NJ
MSC: North Atlantic Division (NAD)
FEMA Region: II
Contractor: DynCorp International
Type: Arena (A2HC)
Patient Type: COVID
Facility Size: 27,000 SF
Bed Capacity: 100
Address: 230 E Ridgewood Ave, Paramus, NJ 07652



Plans

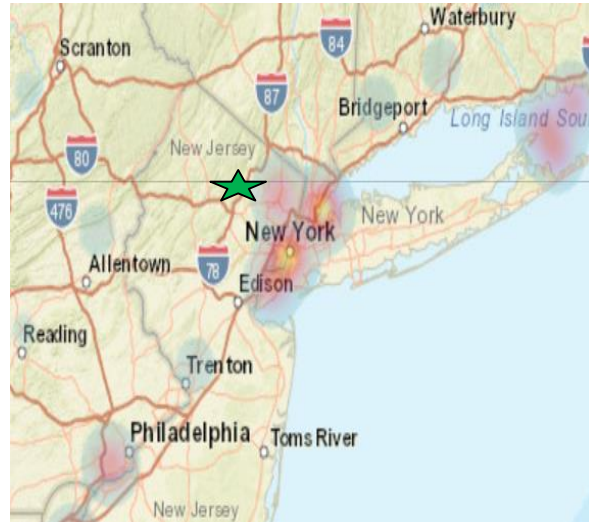
Notes
Tent will be erected in parking lot to fit 100 beds.



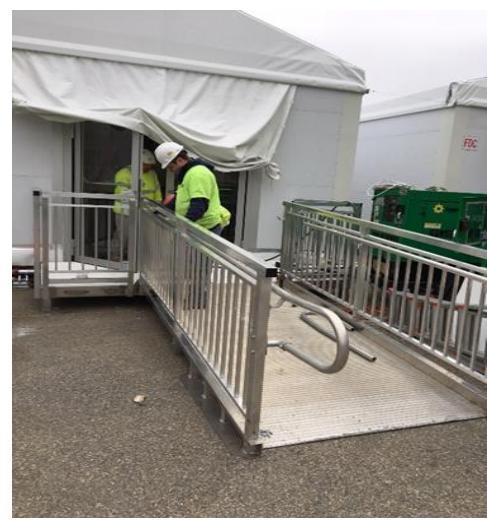
Timeline

Assessment MA received	23 MAR 20
Construction MA received	29 MAR 20
Contract Awarded	14 APR 20
Construction Start	15 APR 20
Contractual Completion	29 APR 20
Estimated Completion	29 APR 20
Actual Completion	29 APR 20
Total Construction Duration	15 Days
Notes: 100% Complete;	

Projected Bed Shortfall 07 JUN – 14 JUN



In Progress Photos



JAVITS CENTER – NEW YORK, NY

ARENA TO HEALTHCARE (A2HC)

Alternate Care Facility Overview

Location: New York, NY
MSC: North Atlantic Division (NAD)
FEMA Region: II
Contractor: NYCC Op. Corp.
Type: Arena (A2HC)
Patient Type: COVID
Facility Size: 470,000 SF
Bed Capacity: 2,106
Address: 655 West 34 th St., New York, NY 10014.



Plans

Plans Key:
Blue: Patient rooms / beds
Pink/Purple: Nurse stations

Notes
1st floor: 652 beds with 1,304 bed surge capacity
3rd Floor: 946 bed with 1,892 bed surge capacity

Also includes 508 beds with 1,016 bed surge capacity (FMS area)



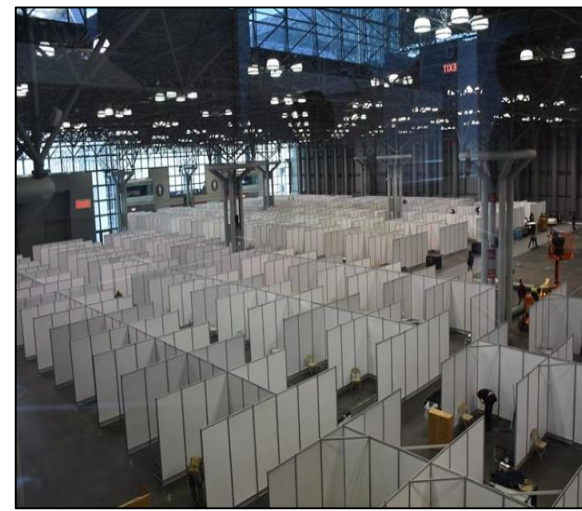
Timeline

Assessment MA received	22 MAR 20
Construction MA received	23 MAR 20
Contract Awarded	25 MAR 20
Construction Start	30 MAR 20
Contractual Completion	30 APR 20
Estimated Completion	30 APR 20
Actual Completion	24 APR 20
Total Construction Duration	26 Days
Notes: 100% Complete; First patient arrived 11 APR 20.	

Projected Bed Shortfall 07 JUN – 14 JUN



In Progress Photos



THE RANCH EVENTS COMPLEX – LOVELAND, CO

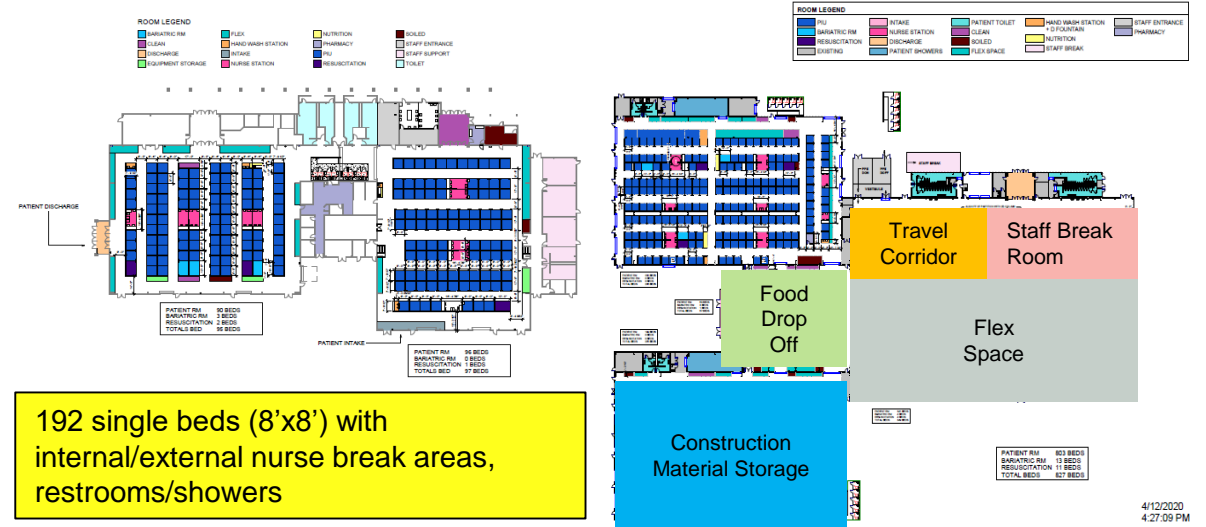
ARENA TO HEALTHCARE (A2HC)

Alternate Care Facility Overview

Location: Loveland, CO
MSC: South Pacific Division (SPD)
FEMA Region: VIII
Contractor: AECOM Tech. Services LLC
Type: Arena (A2HC)
Patient Type: COVID
Facility Size: 374,000 SF
Bed Capacity: 192
Address: 5280 Arena Cir, Loveland, CO 80538



Plans



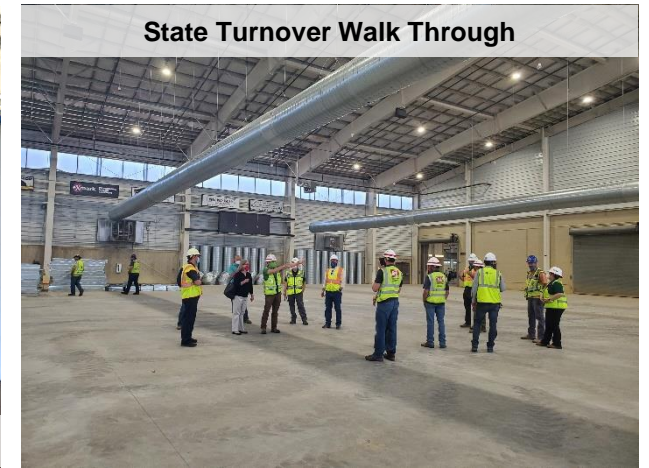
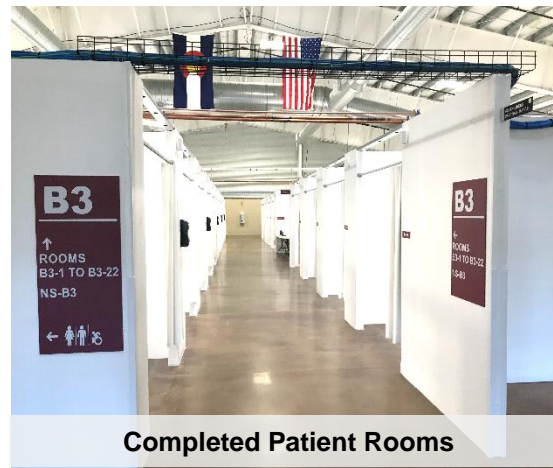
Timeline

Assessment MA received	03 APR 20
Construction MA received	10 APR 20
Contract Awarded	08 APR 20
Construction Start	11 APR 20
Contractual Completion	10 MAY 20
Estimated Completion	01 MAY 20
Actual Completion	01 MAY 20
Total Construction Duration	21 Days
Notes: 100% Complete	

Projected Bed Shortfall 07 JUN – 14 JUN



In Progress Photos





CHINLE COMMUNITY CENTER (NAVAJO NATION) – CHINLE, AZ

ARENA TO HEALTHCARE (A2HC)



US Army Corps of Engineers.

Alternate Care Facility Overview

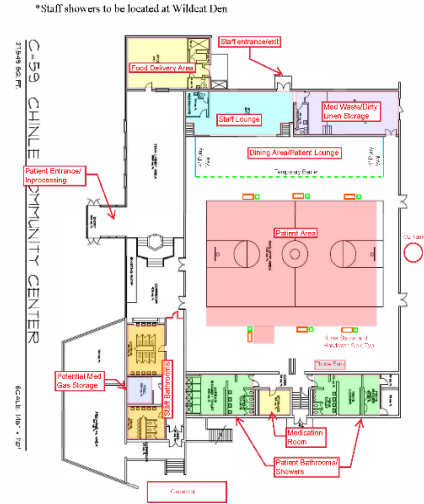
Location: Chinle, AZ
MSC: South Pacific Division (SPD)
FEMA Region: IX
Contractor: Weil Construction, Inc.
Type: Arena (A2HC)
Patient Type: NON-COVID
Facility Size: 15,000 SF
Bed Capacity: 50
Address: US 191, Mile 448, Chinle, AZ, 86503



Plans

Notes:

- Facility will contain
- 50 patient cubes
- Plumbed oxygen to each cube
- Six nurses' stations
- No negative pressure



Timeline

Assessment MA received	04 APR 20
Construction MA received	15 APR 20
Contract Awarded	17 APR 20
Construction Start	18 APR 20
Contractual Completion	01 MAY 20
Estimated Completion	01 MAY 20
Actual Completion	01 MAY 20
Total Construction Duration	14 Days

Notes: 100% Complete

Projected Bed Shortfall 07 JUN – 14 JUN



In Progress Photos





US Army Corps
of Engineers.

EAST ORANGE GENERAL HOSPITAL – EAST ORANGE, NJ

HOTEL TO HEALTHCARE (H2HC)



Alternate Care Facility Overview

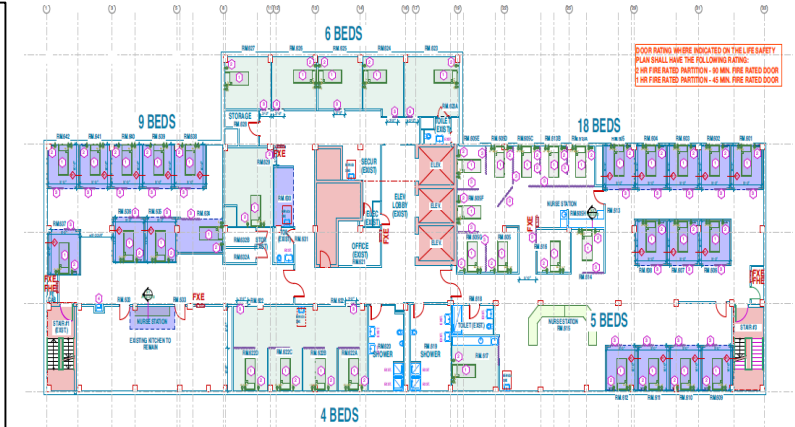
Location: East Orange, NJ
MSC: North Atlantic Division (NAD)
FEMA Region: II
Contractor: Cutting Edge LLC
Type: Hotel (H2HC)
Patient Type: COVID
Facility Size: 40,000 SF
Bed Capacity: 250
Address: 240 Central Ave, East Orange, NJ 07018



Plans

Notes

6 floors planned for use for capacity totaling 250 beds



Timeline

Assessment MA received	23 MAR 20
Construction MA received	29 MAR 20
Contract Awarded	07 APR 20
Construction Start	09 APR 20
Contractual Completion	05 MAY 20
Estimated Completion	05 MAY 20
Actual Completion	03 MAY 20
Total Construction Duration	25 Days

Projected Bed Shortfall 07 JUN – 14 JUN



In Progress Photos





WALTER E. WASHINGTON CONV. CNTR – WASHINGTON, D.C.

ARENA TO HEALTHCARE (A2HC)



US Army Corps
of Engineers.

Alternate Care Facility Overview

Location: Walt. Wash. Conv. Center
MSC: North Atlantic Division (NAD)
FEMA Region: III
Contractor: Hensel Phelps Construction Co.
Type: Arena (A2HC)
Patient Type: COVID & NON-COVID
Facility Size: 2,300,000 SF
Beds Capacity: 443
Address: 801 Mt Vernon PL. NW, Washington, D.C. 20001



Plans

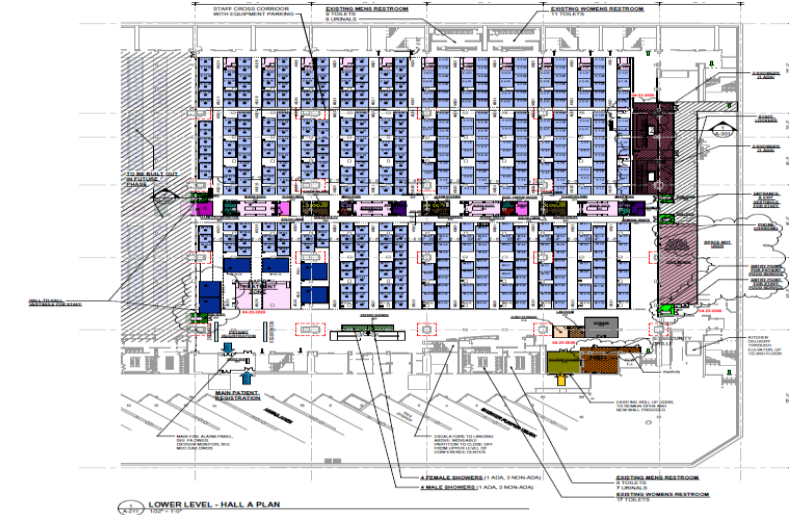
Plans Key:
Set up beds on the Lower level (Hall A) only.

Notes:
29 APR 20: Contract definitized

Executed changes AA, AB, AC, and AD

11 MAY 20: Press conference with DC mayor

12 MAY 20: AAR



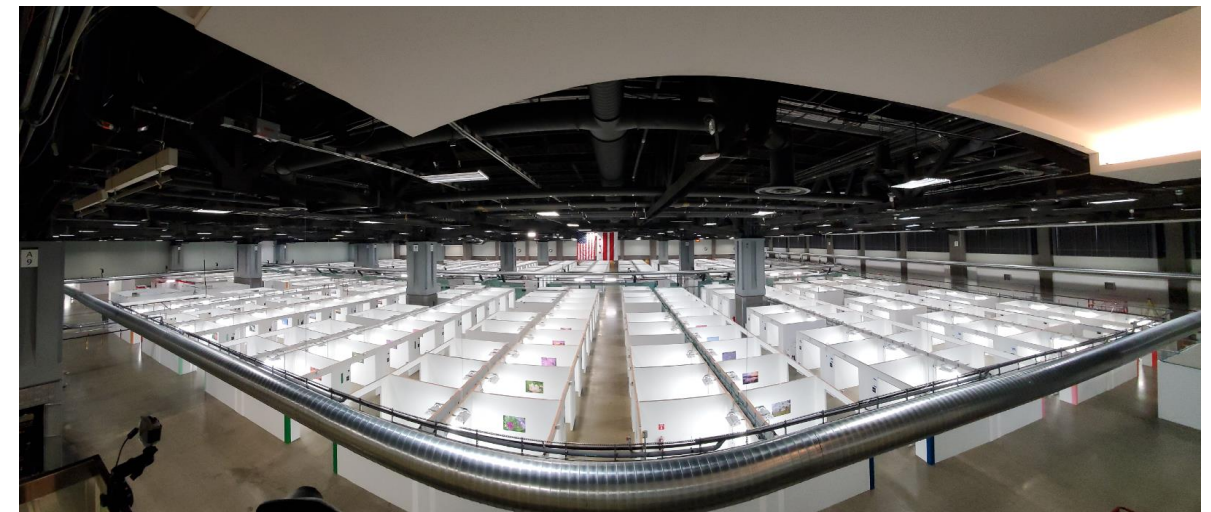
Timeline

Assessment MA received	17 MAR 20
Construction MA received	07 APR 20
Contract Awarded	16 APR 20
Construction Start	22 APR 20
Contractual Completion	08 MAY 20
Estimated Completion	08 MAY 20
Actual Completion	08 MAY 20
Total Construction Duration	17 Days
Notes: 100% Complete	

Projected Bed Shortfall 07 JUN – 14 JUN



In Progress Photos





210 ARNG REGIONAL TRAINING INSTITUTE – ST. CROIX, USVI

HOTEL TO HEALTHCARE (H2HC)



US Army Corps
of Engineers.

Alternate Care Facility Overview

Location: St. Croix, USVI
MSC: South Atlantic Division (SAD)
FEMA Region: II
Contractor: CONTI Federal Services, LLC.
Type: Hotel (H2HC)
Patient Type: COVID
Facility Size: 44,788 SF
Bed Capacity: 24
Address: Rural Route #1 Box 9200 Kingshill, St Croix 00850 USVI






Timeline

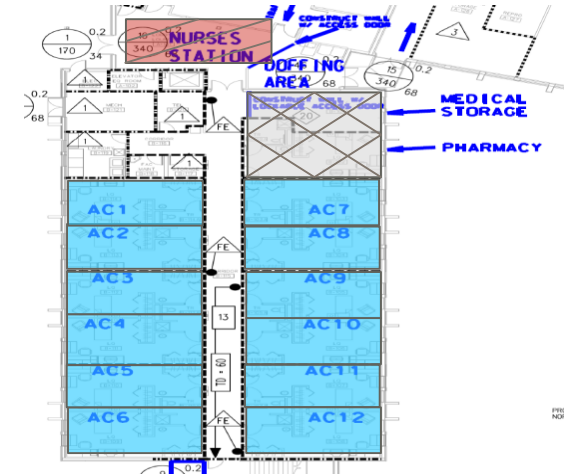
Assessment MA received	12 APR 20
Construction MA received	13 APR 20
Contract Awarded	17 APR 20
Construction Start	24 APR 20
Contractual Completion	26 MAY 20
Estimated Completion	08 MAY 20
Actual Completion	08 MAY 20
Total Construction Duration	15 Days
<u>Notes:</u> 100% Complete;	

Projected Bed Shortfall 07 JUN – 14 JUN



Plans

-  Nurse Station
-  Double Occupancy Acute Care Rooms
-  Admin / Storage Area

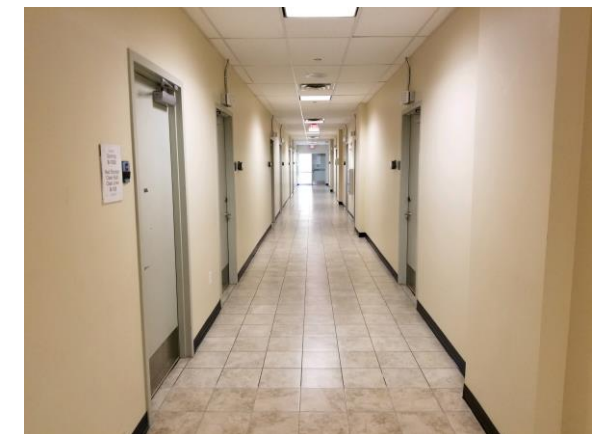


First Floor

In Progress Photos



Nurse Cleaning Area



Finalized Hallway with Patient Rooms

INTEGRIS BAPTIST - PORTLAND CAMPUS – OKC, OK

HOTEL TO HEALTHCARE (H2HC)

Alternate Care Facility Overview

Location: Oklahoma City, OK
MSC: Southwestern Division (SWD)
FEMA Region: VI
FEMA MATO (\$): \$2,281,693 (Definitized)
Type: Hospital
Patient Type: COVID
Facility Size: 400,000 SF
Beds: 110 beds
Address: 5501 N Portland, Oklahoma City, OK 73112
KTR: Manhattan Construction Company Award Amount: CLIN 2 = \$2.28M Definitization Date: 05MAY20 (After 1600 due to Congressional notification requirement)



Timeline

Assessment MA received	10 APR 20
Construction MA received	23 APR 20
Contract Awarded	26 APR 20
Construction Start	27 APR 20
Contractual Completion	13 MAY 20
Estimated Completion	08 MAY 20
Actual Completion	08 MAY 20
Total Construction Duration	12 Days
Percent Complete	100%
Notes: All contractual requirements have been completed by the Contractor.	

Projected Heat Map + 3 weeks

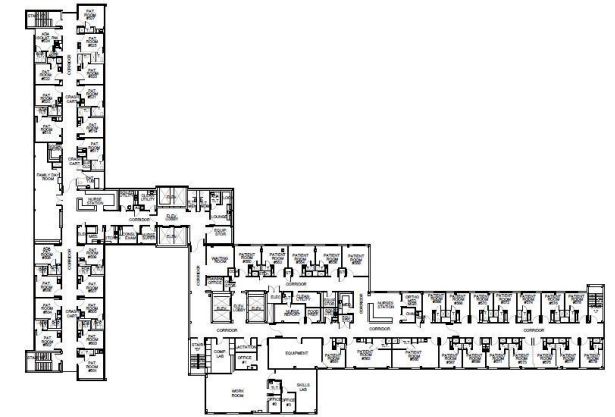


Plans

Notes:

Construction is complete.

All Punch list items & Final cleaning completed.



Typical Upper Floor Plan

In Progress Photos



OSU MEDICAL CENTER – TULSA, OK

EXISTING HOSPITAL

Alternate Care Facility Overview

Location: Tulsa, OK
MSC: Southwestern Division (SWD)
FEMA Region: VI
FEMA MATO (\$): \$6,018,307 (Definitized)
Type: Hospital
Patient Type: COVID
Facility Size: 74,200 SF
Beds: 125 Rooms
Address: 744 W 9 th Street, Tulsa, OK 74127
KTR: Manhattan Construction Company Award Amount: CLIN 1 = \$6.02M Definitization Date: 05MAY20 (After 1600 due to Congressional notification requirement)

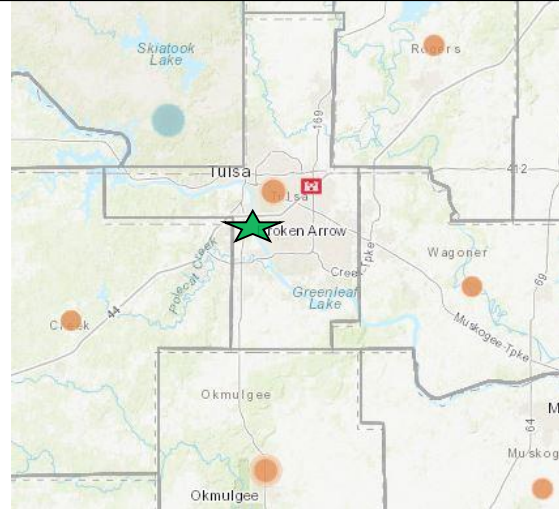


Timeline

Assessment MA received	10 APR 20
Construction MA received	23 APR 20
Contract Awarded	26 APR 20
Construction Start	27 APR 20
Contractual Completion	13 MAY 20
Estimated Completion	10 MAY 20
Actual Completion	10 MAY 20
Total Construction Duration	14 Days
Percent Complete	100%

Notes: All contractual requirements have been completed by the Contractor.

Projected Heat Map + 3 weeks



Plans

Notes:

Construction is complete.

All punch list items & final cleaning have been completed and the substantial completion letter has been sent to the contractor.

Minor training on new equipment continues for facility personnel.



Tele-health Floor Plan

Typical Floor Plan

In Progress Photos



Alternate Care Facility Overview

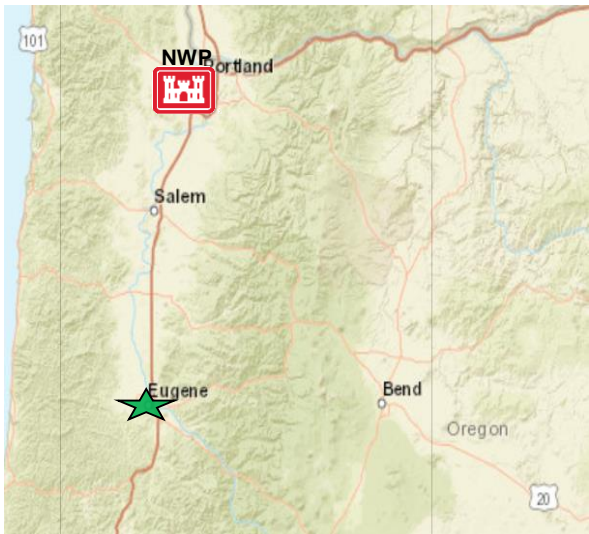
Location: Eugene, OR
MSC: Northwest Division (NWD)
FEMA Region: X
Contractor: Turner Construction Company
Type: Hotel (H2HC)
Patient Type: COVID
Facility Size: 18,550 SF
Bed Capacity: 42
Address: 100 River Ave, Eugene, OR 97404



Timeline

Assessment MA received	03 APR 20
Construction MA received	16 APR 20
Contract Awarded	17 APR 20
Construction Start	18 APR 20
Contractual Completion	15 MAY 20
Estimated Completion	13 MAY 20
Actual Completion	13 MAY 20
Total Construction Duration	26 Days
Notes: 100% Complete	

Projected Bed Shortfall 07 JUN – 14 JUN



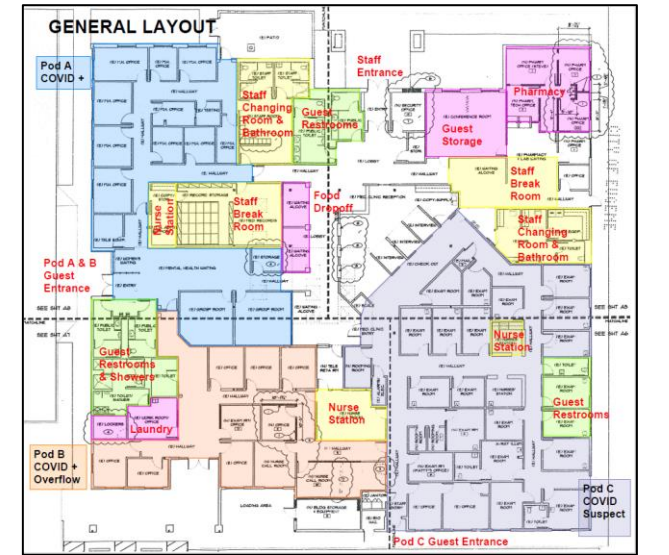
Plans

Notes:
GENERAL LAYOUT (right)

Scope Items:

- Utility upgrade/repair of HVAC/elec./plumbing systems
- Interior renovation of patient/staff/bath rooms
- Upgrade of nurse call system and IT infrastructure
- Upgrade of interior/exterior security features
- Repair existing ext. fencing
- Partitions (COVID/presumed COVID)

Note: COVID/presumed COVID separated by walls/secured doors and constructed partitions



In Progress Photos





US Army Corps of Engineers.

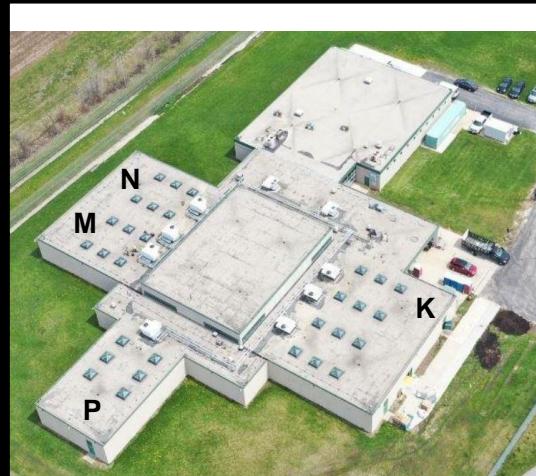


LOTTER BUILDING MILWAUKEE COUNTY HOC – FRANKLIN, WI HOTEL TO HEALTHCARE (H2HC)



Alternate Care Facility Overview

Location: Franklin, WI
MSC: Mississippi Valley Div (MVD); Executing: Great Lakes and River Div (LRD)
FEMA Region: V
Contractor: GILBANE
Type: (H2HC)
Patient Type: COVID-19
Facility Size: 17,500 SF
Bed Capacity: 120 (30 low acuity / 90 non acute)
Address: 8885 S. 68 th Street, West Allis, WI 53214



Non-ICU Bed Projection + 30 Days



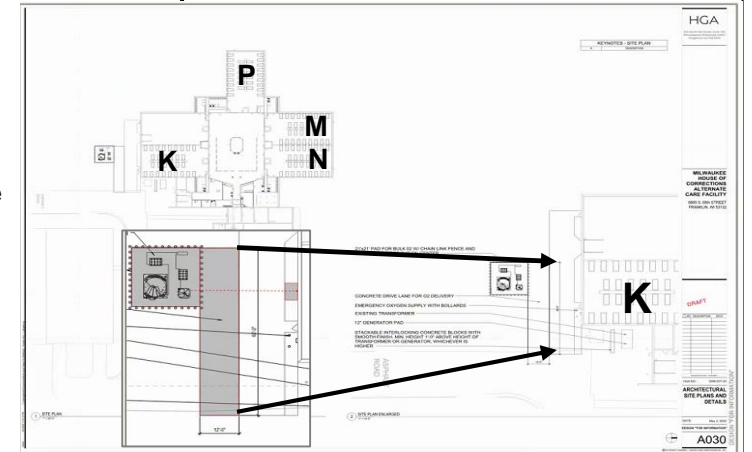
Timeline

Assessment MA received	17 APR 20
Construction MA received	30 APR 20
Contract Awarded	30 APR 20
Construction Start	04 MAY 20
Required Delivery	29 May 20
Estimated Completion	21 MAY 20
Actual Completion	
Total Construction Days	17 Days
Notes: 100% complete 30 Day period of performance	

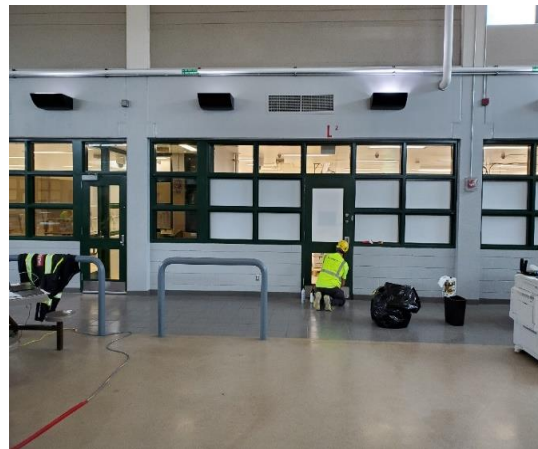
Plans

Plans Key:

- 30 Beds Low-Acuity (K)
- In-Line Bulk Oxygen (K)
- 90 Beds Non-Acute (M, N, P - 30 Beds Each)
- Modify all Dorms to Include Showers
- New 150K Back-Up Generator/ATS
- Modify Staff Support Areas
- Service HVAC and Adjust for Negative Pressure



In Progress Photos



Completing window "frosting" for the print shop



HOC Staff transporting bunks into the dormitories



KALISPELL REGIONAL MEDICAL CENTER – KALISPELL, MT

ARENA TO HEALTHCARE (A2HC)



US Army Corps
of Engineers.

Alternate Care Facility Overview

Location: Kalispell, MT
MSC: Northwestern Division (NWD)
FEMA Region: VIII
Contractor: TBD
Type: Arena (A2HC)
Patient Type: NON-COVID
Facility Size: 26,250 SF
Bed Capacity: 100
Address: 310 Sunnyview Lane, Kalispell, MT 59901

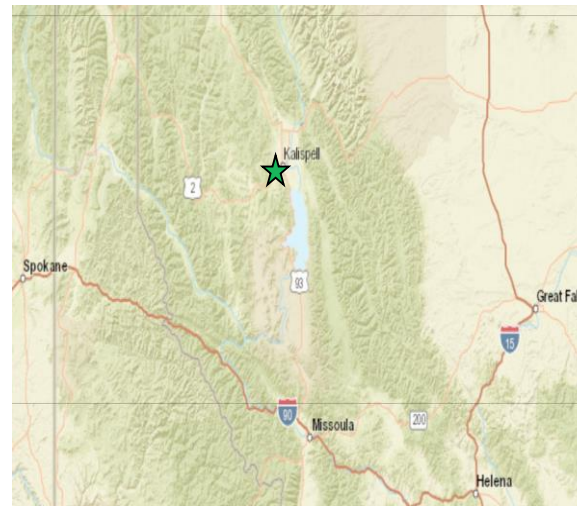


310 Sunnyview Lane, Kalispell, MT 59901

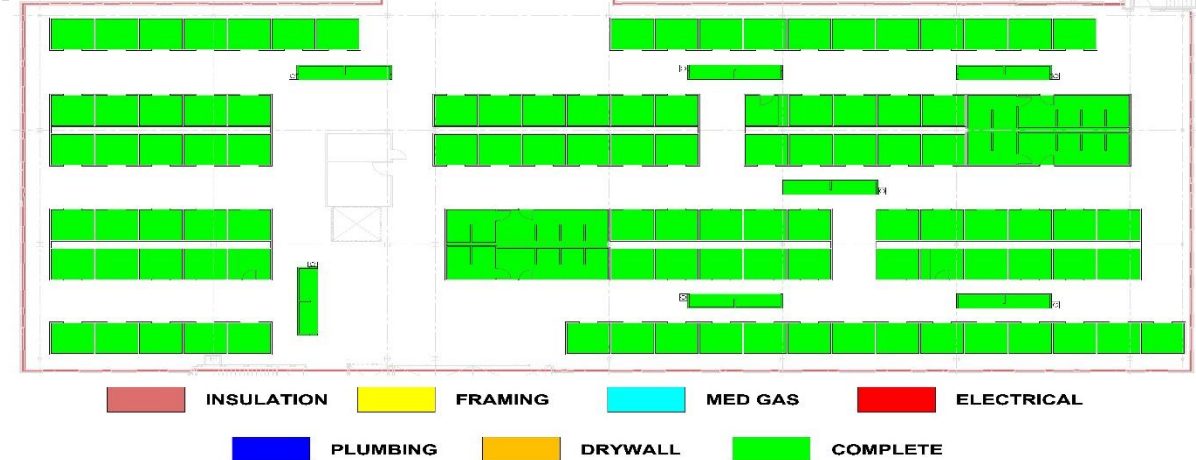
Timeline

Assessment MA received	18 MAR 20
Construction MA received	15 APR 20
Contract Awarded	05 MAY 20
Construction Start	06 MAY 20
Required Delivery	26 MAY 20
Estimated Completion	26 MAY 20
Actual Completion	24 MAY 20
Total Construction Duration	21 Days
Notes: 100% Complete	

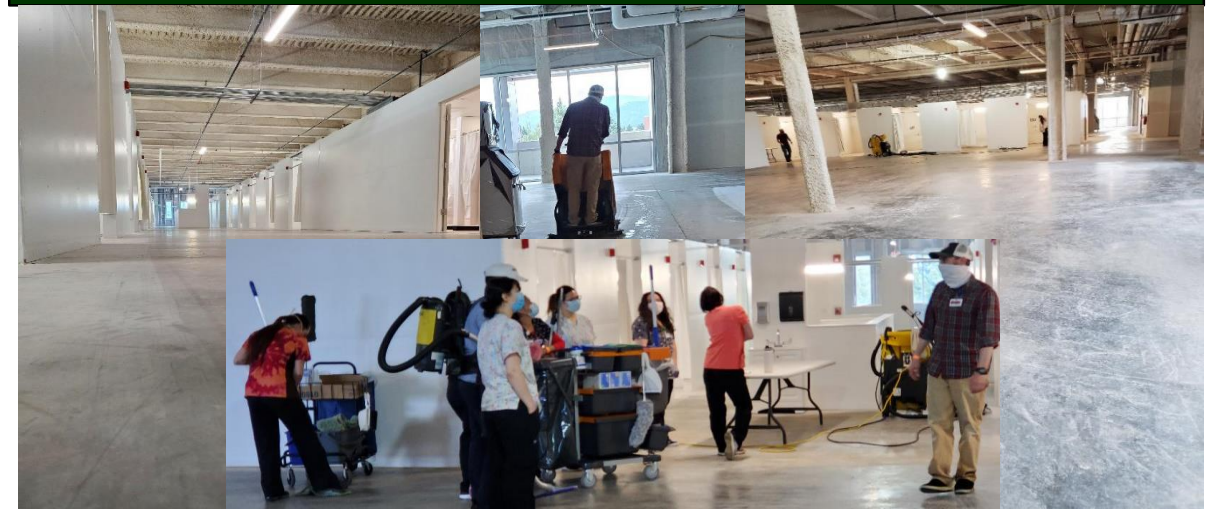
Projected Bed Shortfall 07 JUN – 14 JUN



Plans



In Progress Photos



NASHVILLE GENERAL HOSPITAL – NASHVILLE, TN

HOSPITAL TO HEALTHCARE (H2HC)

Alternate Care Facility Overview

Location: Nashville, TN
MSC: Great Lakes & Ohio River Div. (LRD)
FEMA Region: IV
Contractor: Turner Construction Company (TCCo)
Type: Hospital (H2HC)
Patient Type: COVID
Facility Size: 26,292 sq-ft
Beds: 67
Address: 1818 Albion St. Nashville, TN 37208



Timeline

Assessment Completed	10 APR 20
MATO received	01 MAY 20
Contract Awarded	01 MAY 20
Construction Start	04 MAY 20
Required Delivery	29 MAY 20
Estimated Completion	29 MAY 20
Actual Completion	TBD
Total Days	28


Last 24: 100% Complete. Testing and balancing continues on the 8th floor as well as focusing on the minor punch list.

Projected Bed Shortfall 31 May – 07 June



Plans

Plans Key:

 Patient Spaces

 Nursing Stations

Notes:

Left: 2nd Floor – 27 Patient Care Spaces

Right: 8th Floor – 40 Patient Care Spaces



In Progress Photos



1) Members of TCCo, USACE, STREAM, NGH, and State Department of Health walked the space for a joint review. 2) Floors waxed and curtains are displayed.

Alternate Care Facility Overview

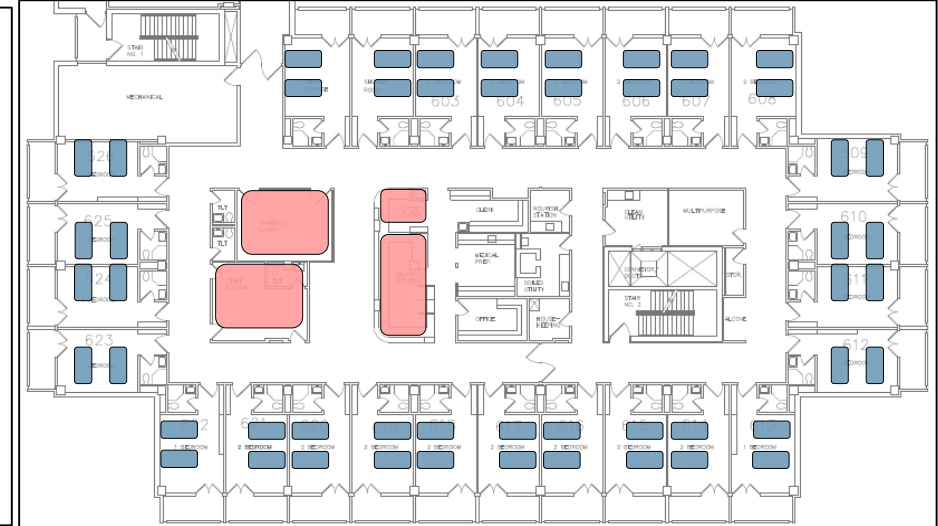
Location: Phoenix, AZ
MSC: South Pacific Division (SPD)
FEMA Region: IX
Contractor: Aptim Fed. Serv., LLC
Type: Hotel (H2HC)
Patient Type: COVID
Facility Size: 219,000 SF
Bed Capacity: 254
Address: 1800 E Van Buren St., Phoenix, AZ 85006



Plans

Notes:
1 building with 7 patient floors, not all floors have the same layout. This is an example of the 7th Floor, that shows 2 beds per room, and 52 bed spaces. State ask is 254 beds

■ = bed space
■ = staff/admin



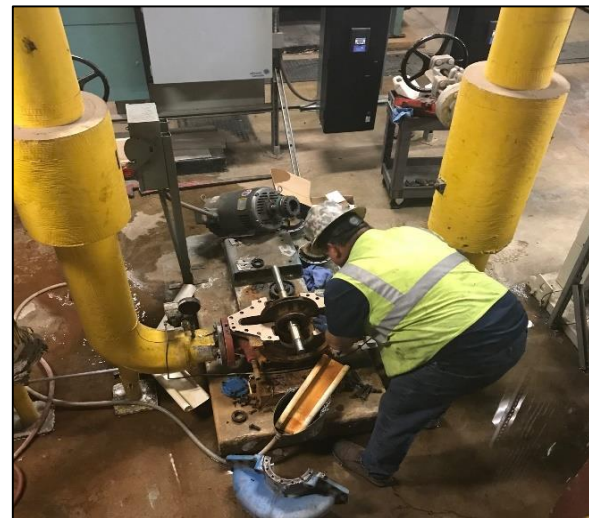
Timeline

Assessment MA received	24 MAR 20
Construction MA received	31 MAR 20
Contract Awarded	11 APR 20
Construction Start	12 APR 20
Contractual Completion	31 MAY 20
Estimated Completion	31 MAY 20
Actual Completion	TBD
Total Construction Duration	50 Days

Projected Bed Shortfall 07 JUN – 14 JUN



In Progress Photos



Notes: 99% Complete; Construction for initial SOW was completed on 02 MAY. Work from add-ons/mods is currently ongoing an expected to be complete by 31 MAY 20.



US Army Corps
of Engineers.

COMMERCIAL APPEAL BUILDING – MEMPHIS, TN

ARENA TO HEALTHCARE (A2HC)



Alternate Care Facility Overview

Location: Memphis, TN
MSC: Great Lakes and River Div (LRD) Executing: Mississippi Valley Div (MVD)
FEMA Region: IV
Contractor: AECOM
Type: Arena (A2HC)
Patient Type: COVID-19
Facility Size: 140,000+/- sq ft
Beds: 401 (368 PCS, 33 PIU)
Address: 495 Union Ave, Memphis, TN 38103

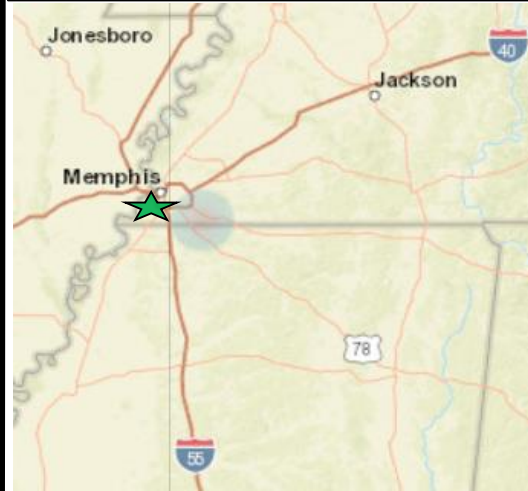


Timeline

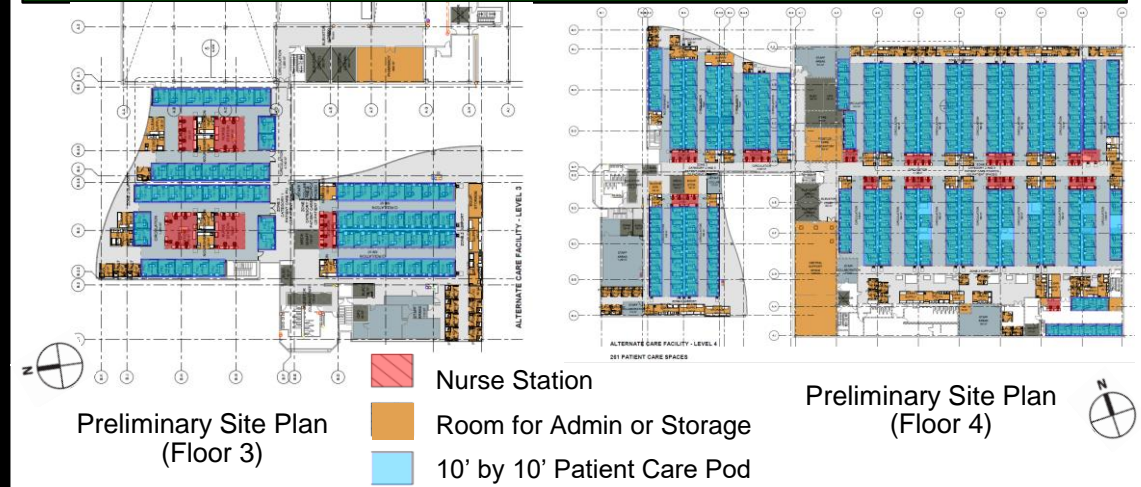
Assessment MA received	03 APR 20
Construction MA received	10 APR 20
Contract Awarded	16 APR 20
Construction Start	16 APR 20
Required Delivery	15 MAY 20
Estimated Completion	10 JUN 20
Actual Completion	
Total Construction	34 Days

Notes: 97.4% complete
Beneficial occupancy by State, KTR continues to work punchlist items and HEPA MOD

Projected Bed Shortfall 17-23 May



Plans



In Progress Photos



26MAY20: Contractors initiating work on HEPA Filter installation

Alternate Care Facility Overview

Location: Guymon, OK
MSC: Southwestern Division (SWD)
FEMA Region: VI
FEMA MATO (\$): \$675,000
Type: Hospital
Patient Type: COVID
Facility Size: ~8000SF
Beds: 8 Rooms
Address: 520 Medical Drive, Guymon, OK 73942
KTR: Manhattan Construction Company Award Amount: \$475,000 Definitization Date: TBD



Plans

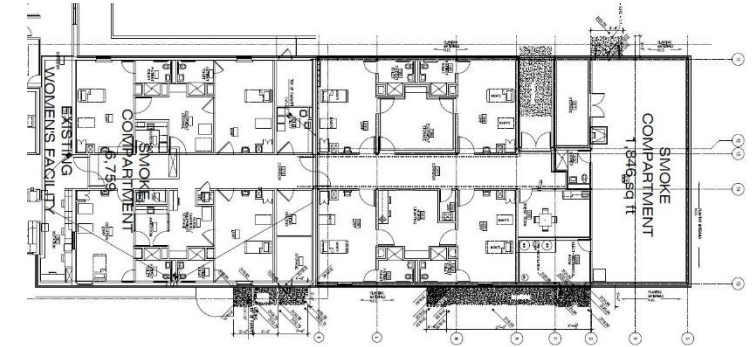
Notes:

Flooring crew began carpet demo with Vinyl floor installation slated after.

New desiccant drier being installed to address med-gas system deficiencies. Med-gas NFPA alarm repaired.

New ATS for emergency generator arrived & was placed in position.

Nurse call testing completed & is fully operational in patient care areas.



Floor Plan

Timeline

Assessment MA received	19 MAY 20
Construction MA received	22 MAY 20
Contract Awarded	24 MAY 20
Construction Start	26 MAY 20
Contractual Completion	05 JUN 20
Estimated Completion	05 JUN 20
Actual Completion	XX JUN 20
Total Construction Duration	11 Days
Percent Complete	57%

Notes: CCTV rough-in was completed.

Location Map



In Progress Photos

